

Mesa Community College
Feeder High School Trends Report



Mesa Community College Feeder High Schools

Executive Summary

Introduction

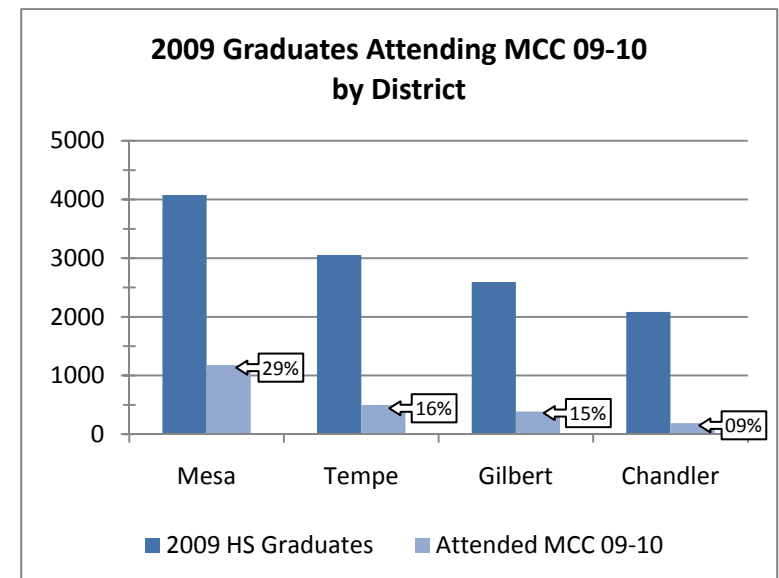
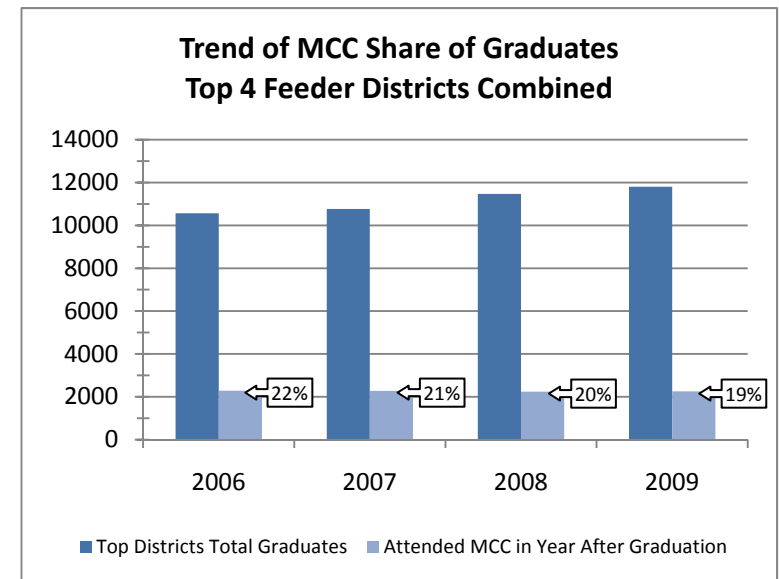
This report presents enrollment and graduate data for the four high school districts feeding the most graduates to Mesa Community College (MCC): Mesa Public Schools (MPS), Tempe High School District (THSD), Gilbert Public Schools (GPS), and Chandler Unified School District (CUSD). Apache Junction High School is also included in some tables. The report is divided into three sections: 1) trends in recent high school graduates attending MCC in the year after their graduation, 2) trends in feeder high school graduates, and 3) enrollment trends within each feeder district.

Methodology

Data is gathered from Arizona Department of Education (AZDOE) reports and the Arizona 2040 High School Graduate Summary report (AZ2040) prepared by the Maricopa Community College District's Office of Institutional Effectiveness. Statistics from the AZ2040 report are based on high school graduates attending a community college in the summer, fall, or spring semester immediately following their graduation.

Summary

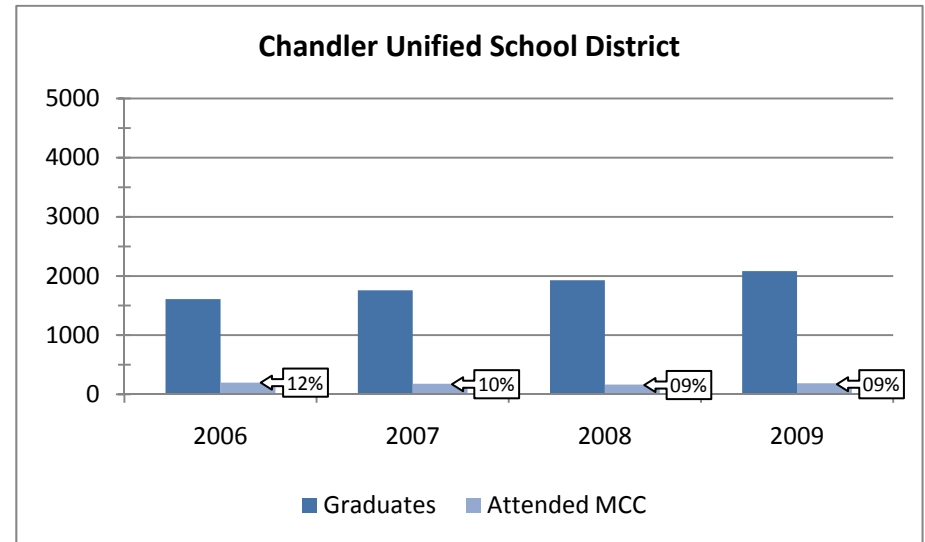
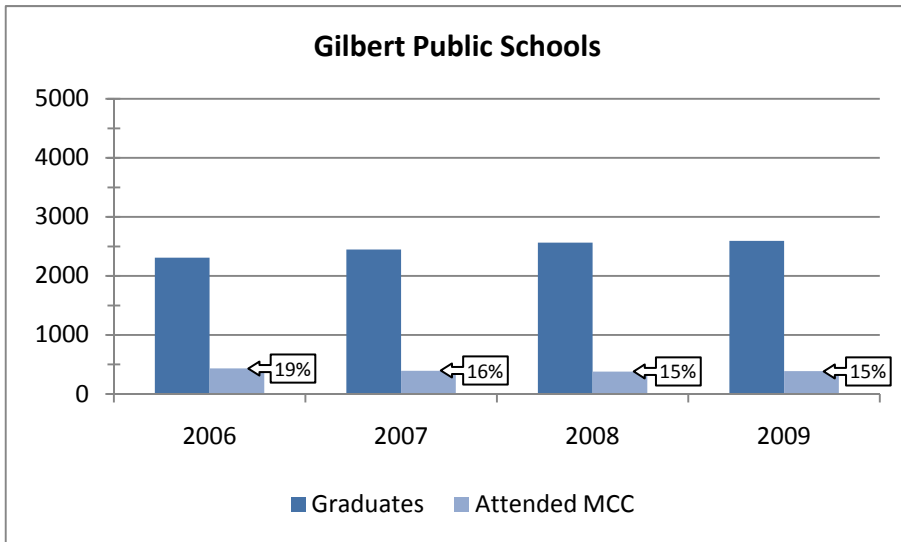
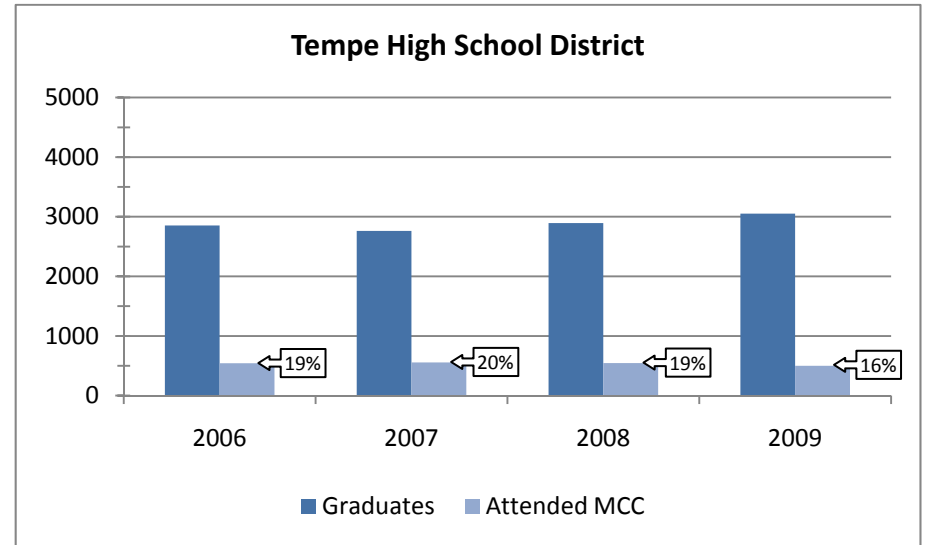
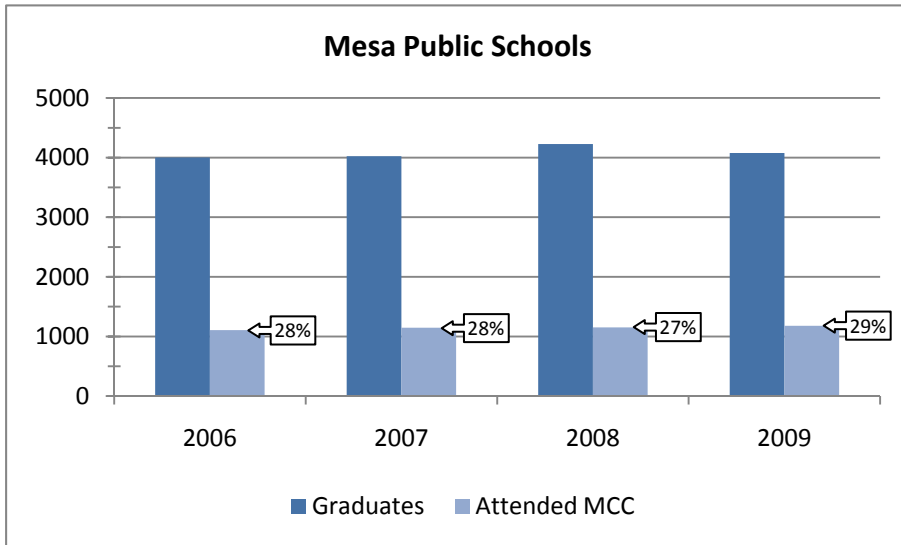
- Just over 3,000 of the total of 2009 Arizona high school graduates attended MCC in the year following graduation.
- While the number of graduates attending MCC from the top four districts increased by 29 students from 2008 to 2009, the number of total high school graduates from these districts increased by 1,241; this caused the overall share of graduates attending MCC to decrease for the fifth consecutive year.
 - The actual number of graduates attending MCC from these four districts has remained extremely stable since 2006. The increases in high school graduates may have contributed to the decrease in the share of graduates attending MCC.
- The share of graduates from MPS attending MCC increased from 27% to 29% while with share from THSD decreased from 19% to 16%. The share from GPS and CUSD remained the same.
- The top five high schools ranked by the total number of 2009 graduates attending MCC are all from MPS: Red Mountain, Mountain View, Dobson, Mesa, and Skyline.
- District-wide enrollment for MPS decreased while the other three districts increased.
- For 10 high schools, 20% or more of their 2009 graduates attended MCC in the year after graduation.



I. High School Graduates Attending MCC

Share of High School Graduates Attending MCC - Top Four Districts

Source: AZDOE and AZ2040 reports



Trend of High School Graduates Attending Mesa Community College by High School

- Nearly 50% of 2009 Arizona high school graduates who attended MCC in the year after graduation came from one of the top ten feeder high schools, and 75% came from one of the top 20 feeder schools listed below.

High Schools	District	Graduated HS 2004; Attended MCC 04-05	Graduated HS 2005; Attended MCC 05-06	Graduated HS 2006; Attended MCC 06-07	Graduated HS 2007; Attended MCC 07-08	Graduated HS 2008; Attended MCC 08-09	Graduated HS 2009; Attended MCC 09-10
Red Mountain	MPS	239	260	232	252	247	282
Mountain View	MPS	299	264	229	241	243	234
Dobson	MPS	248	228	187	201	204	188
Mesa	MPS	235	199	179	177	191	170
Westwood	MPS	180	184	176	134	124	154
Skyline	MPS	161	144	104	141	144	133
Highland	GPS	146	139	116	114	109	130
Marcos de Niza	THSD	122	126	117	89	138	120
Desert Ridge	GPS	44	70	89	100	103	98
Chandler	CUSD	83	84	85	87	89	93
Corona Del Sol	THSD	128	155	124	129	102	90
Mountain Pointe	THSD	103	95	65	104	108	85
Mesquite	GPS	140	150	128	105	94	82
McClintock	THSD	114	83	100	110	99	81
Gilbert	GPS	146	143	100	74	72	77
Tempe	THSD	56	66	35	49	56	56
Desert Vista	THSD	120	104	102	74	42	55
Hamilton	CUSD	80	96	90	61	41	49
Basha	CUSD	-	-	24	30	35	46
Apache Junction	Apache Unified	34	43	28	22	27	35
Sub-total		2,678	2,590	2,310	2,294	2,268	2,258
Other schools		806	802	834	847	734	757
Grand Total: Arizona High Schools		3,484	3,392	3,144	3,141	3,002	3,015

- Data Not Available

Source: AZDOE and AZ2040 reports

Trends in Share of High School Graduates Attending MCC by High School

- Overall, 19% of the 2009 graduates from the top feeder schools attended MCC in the subsequent summer, fall, or spring semesters. When compared to the previous year, the share of the graduating class enrolled at MCC declined at 11 high schools and increased at 9 high schools.

High Schools Ranked by Percent of Graduates Attending MCC in 2008-2009	District	Graduated HS 2005; Attended MCC 05-06	Graduated HS 2006; Attended MCC 06-07	Graduated HS 2007; Attended MCC 07-08	Graduated HS 2008; Attended MCC 08-09	Graduated HS 2009; Attended MCC 09-10
Red Mountain	MPS	36%	30%	34%	31%	35%
Mountain View	MPS	32%	29%	29%	31%	30%
Dobson	MPS	33%	31%	32%	32%	29%
Marcos de Niza	THSD	30%	24%	23%	32%	28%
Westwood	MPS	31%	29%	25%	21%	26%
Mesa	MPS	26%	25%	24%	29%	26%
Skyline	MPS	32%	28%	31%	28%	25%
McClintock	THSD	25%	25%	32%	30%	25%
Tempe	THSD	27%	15%	21%	25%	25%
Desert Ridge	GPS	22%	19%	24%	24%	23%
Highland	GPS	24%	18%	19%	16%	19%
Mountain Pointe	THSD	20%	19%	20%	20%	16%
Corona Del Sol	THSD	23%	19%	22%	16%	14%
Chandler	CUSD	17%	15%	15%	13%	14%
Apache Junction	Apache Unified	17%	12%	8%	10%	13%
Gilbert	GPS	21%	17%	11%	11%	12%
Mesquite	GPS	21%	18%	16%	13%	11%
Desert Vista	THSD	16%	15%	11%	6%	7%
Hamilton	CUSD	11%	16%	9%	6%	7%
Basha	CUSD	-	-	6%	5%	7%
Total of Top High Schools		25%	21%	21%	19%	19%

- Data not available

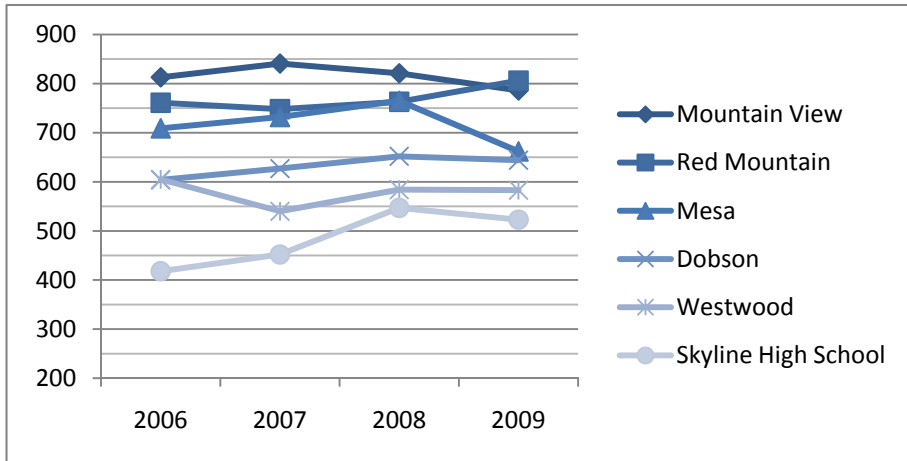
Source: AZDOE and AZ2040 reports

II. High School Graduates from Top Feeder Districts

Source: AZDOE reports

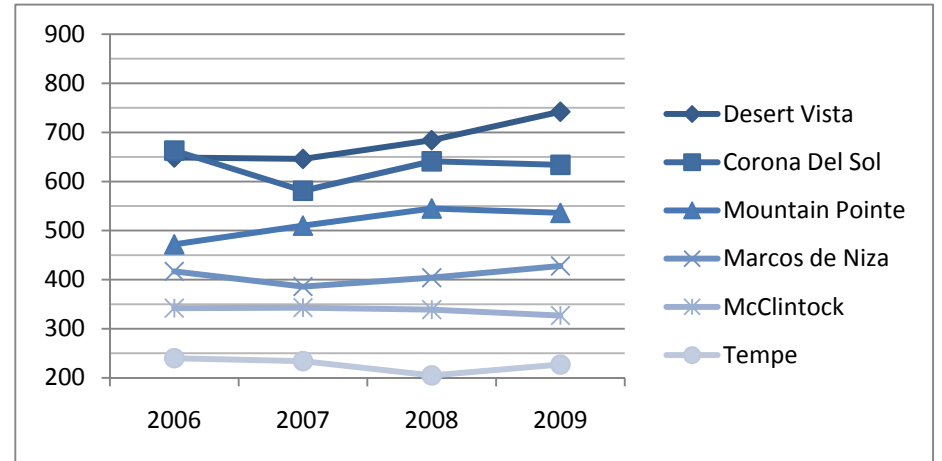
Mesa Public Schools

High Schools Ranked by Number of Students Graduating in 2009	2006 HS Graduates	2007 HS Graduates	2008 HS Graduates	2009 HS Graduates
Red Mountain	761	748	763	806
Mountain View	813	841	821	786
Mesa	709	732	765	662
Dobson	604	627	652	644
Westwood	605	540	584	583
Skyline	418	452	547	523
East Valley Academy	92	84	95	74
District Total	4,002	4,024	4,227	4,078



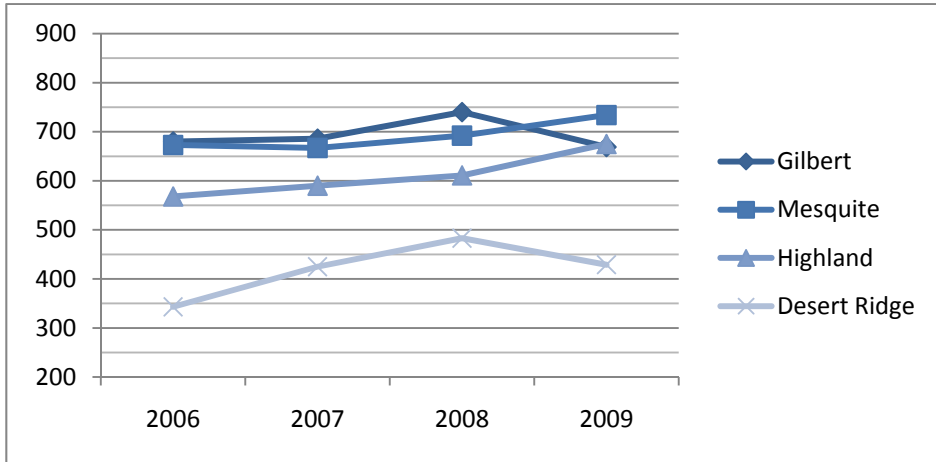
Tempe High School District

High Schools Ranked by Number of Students Graduating in 2009	2006 HS Graduates	2007 HS Graduates	2008 HS Graduates	2009 HS Graduates
Desert Vista	649	646	684	742
Corona Del Sol	663	581	641	634
Mountain Pointe	472	510	545	536
Marcos de Niza	417	386	404	428
McClintock	342	343	339	327
Tempe	240	234	205	227
Compadre	70	62	76	159
District Total	2,853	2,762	2,894	3,053



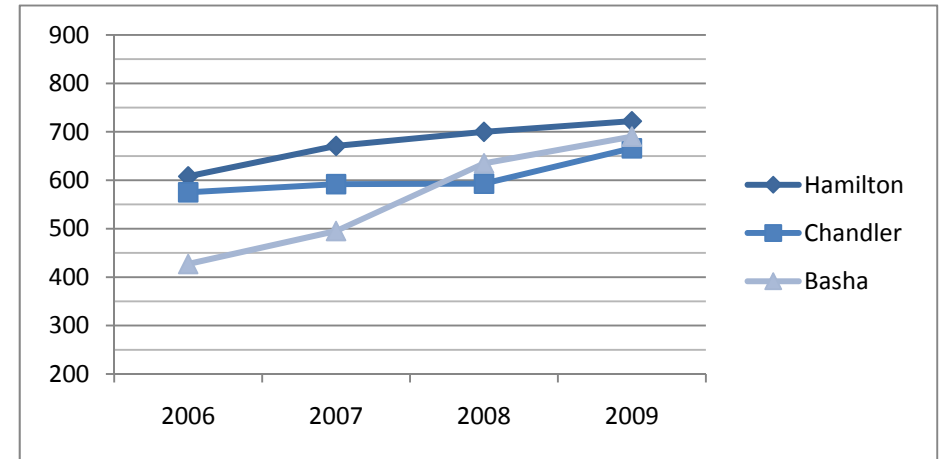
Gilbert Public Schools

High Schools Ranked by Number of Students Graduating in 2009	2006 HS Graduates	2007 HS Graduates	2008 HS Graduates	2009 HS Graduates
Mesquite	673	667	692	734
Highland	568	590	611	675
Gilbert	680	686	740	669
Desert Ridge	343	425	483	429
ACE/Gilbert Learning Center	34	53	39	87
District Total	2,308	2,447	2,565	2,594



Chandler Unified School District

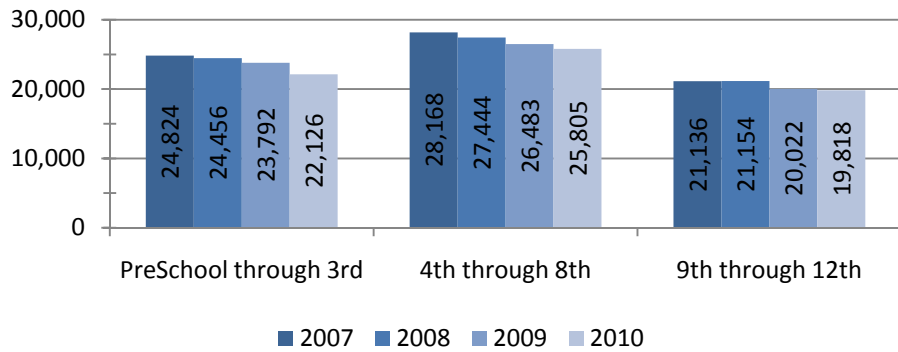
High Schools Ranked by Number of Students Graduating in 2009	2006 HS Graduates	2007 HS Graduates	2008 HS Graduates	2009 HS Graduates
Hamilton	608	671	700	722
Basha	427	495	635	690
Chandler	575	592	593	666
District Total	1,610	1,758	1,928	2,083



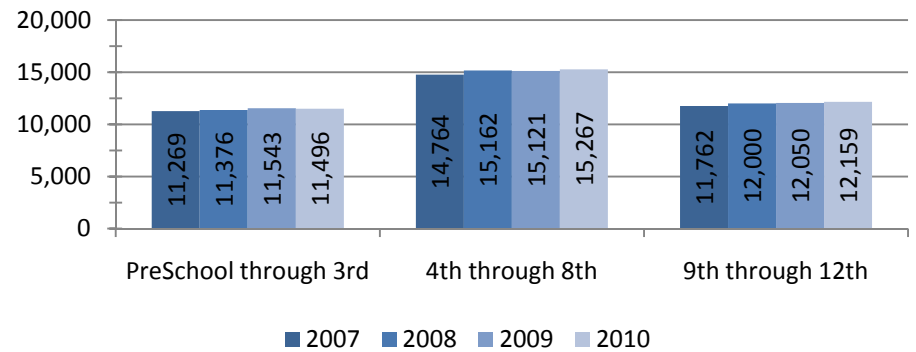
III. Top Feeder Districts Enrollment Trends

Source: AZDOE Enrollment Reports

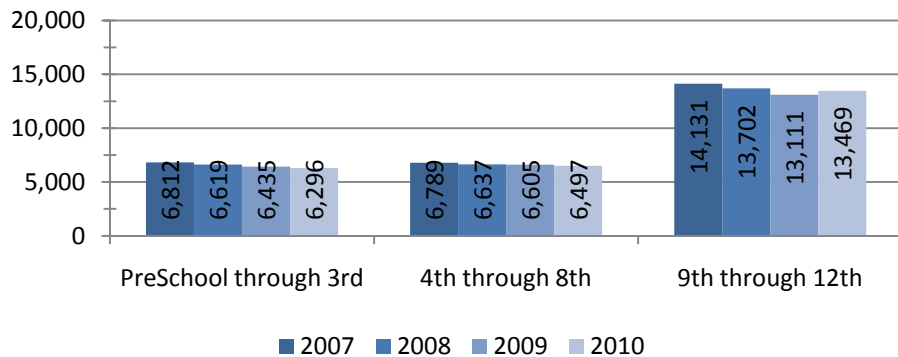
Mesa Public Schools Enrollment					
Grades	2007	2008	2009	2010	% Change 09-10
PreSchool through 3rd	24,741	24,456	23,792	22,126	-7.0%
4th through 8th	28,635	27,444	26,483	25,805	-2.6%
9th through 12th	21,250	21,154	20,022	19,818	-1.0%
Total	74,626	73,054	70,297	67,749	-3.6%



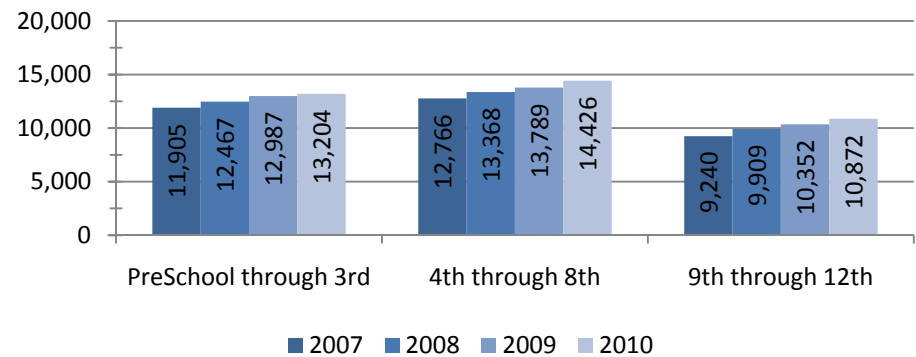
Gilbert Public Schools Enrollment					
Grades	2007	2008	2009	2010	% Change 09-10
PreSchool through 3rd	11,491	11,376	11,543	11,496	-0.4%
4th through 8th	14,824	15,162	15,121	15,267	1.0%
9th through 12th	11,326	12,000	12,050	12,159	0.9%
Total	37,641	38,538	38,714	38,992	0.7%



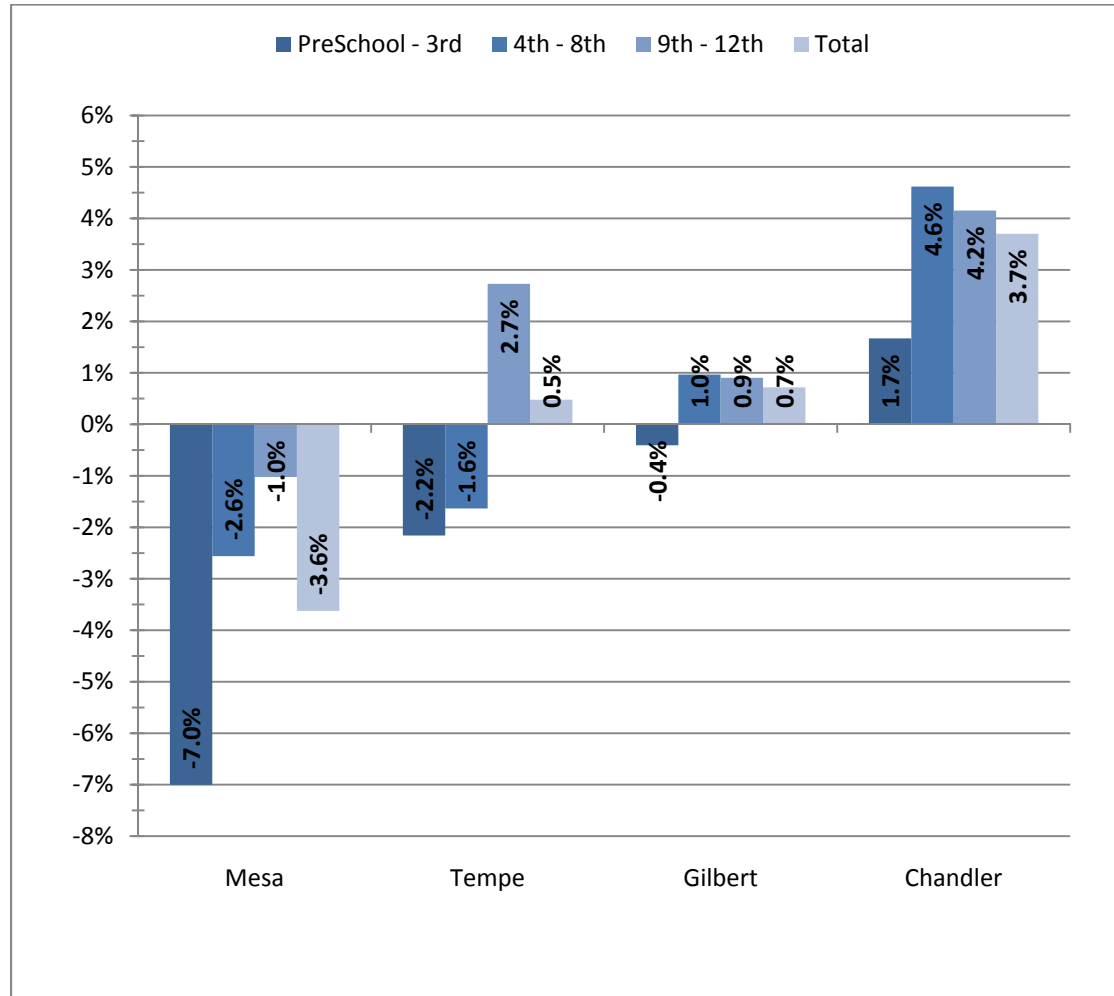
Tempe High School District and Tempe School District Enrollment					
Grades	2007	2008	2009	2010	% Change 09-10
PreSchool through 3rd	6,678	6,619	6,435	6,296	-2.2%
4th through 8th	6,710	6,637	6,605	6,497	-1.6%
9th through 12th	13,701	13,702	13,111	13,469	2.7%
Total	27,089	26,958	26,151	26,276	0.5%



Chandler Unified School District Enrollment					
Grades	2007	2008	2009	2010	% Change 09-10
PreSchool through 3rd	10,782	12,467	12,987	13,204	1.7%
4th through 8th	12,367	13,368	13,789	14,426	4.6%
9th through 12th	8,730	9,909	10,352	10,872	4.2%
Total	31,879	35,744	37,128	38,502	3.7%



Feeder Districts Percent Change in Enrollment 2009-2010



Source: AZDOE October 2010 Enrollment Report