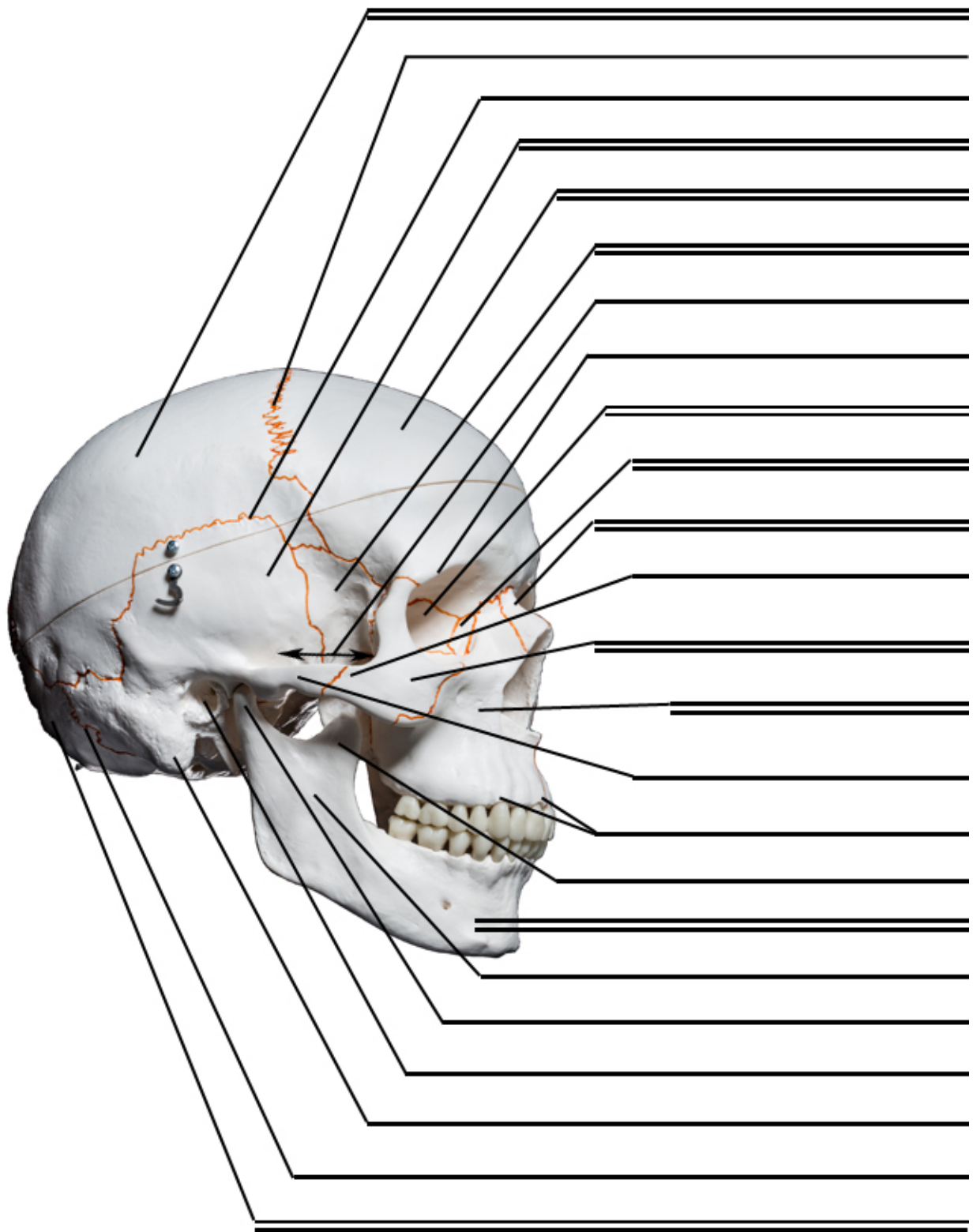


LABELING EXERCISE: BONES OF THE AXIAL AND APPENDICULAR SKELETON

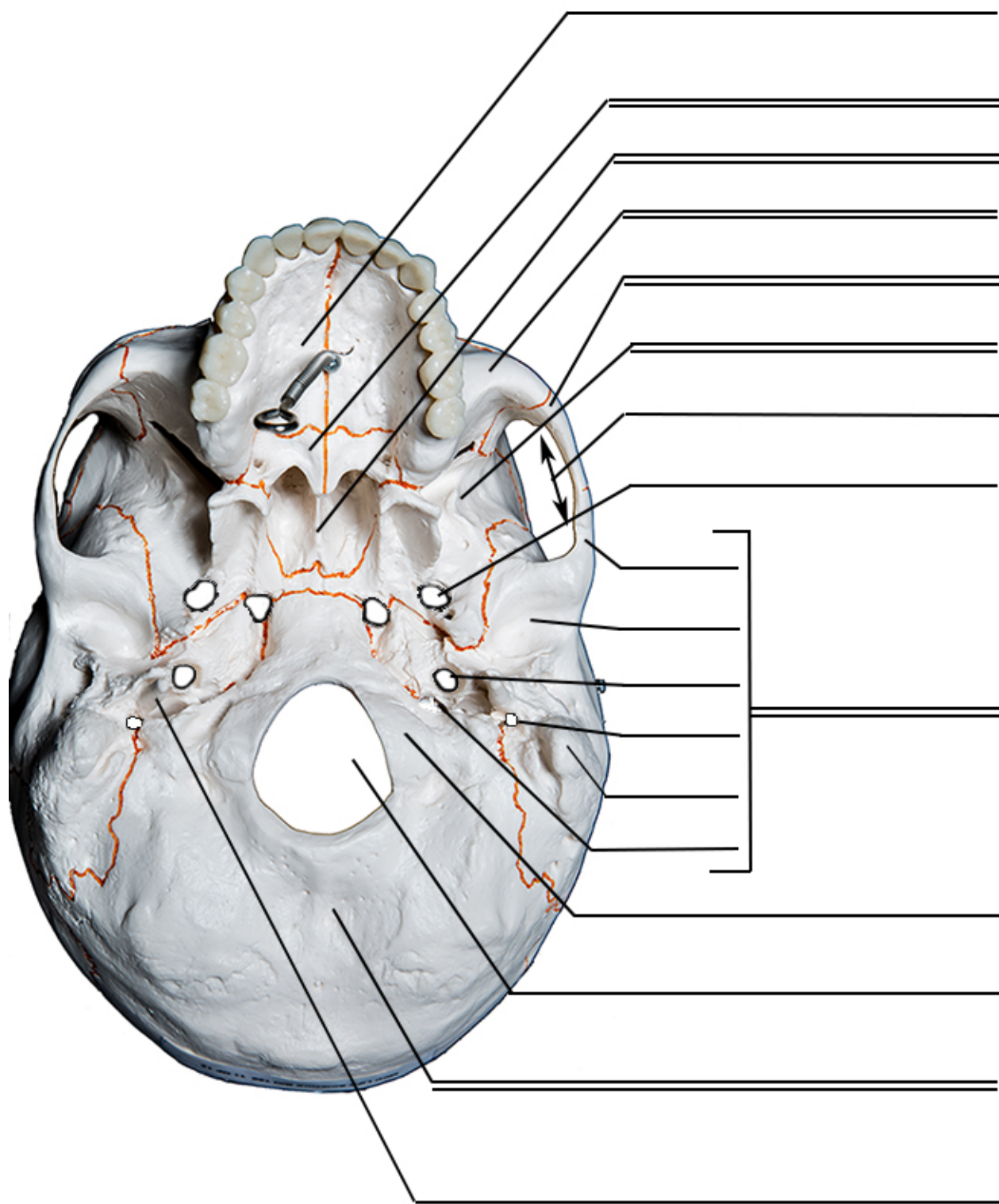
Most, but not all, features you are required to know are shown on the following pages. Study from the bone list or your textbook after you marked the drawings as instructed on page 6-2. After you have studied the bones in lab, label the drawings as a self-test. **Do not spend your precious lab time labeling these drawings, this is work you can do at home.** The names for parts and surface markings of bones are to be written on the **single lines** (____). The **double lines** (=====) indicate where bone names are required. By covering your first set of labels you can repeat the self-test for review.



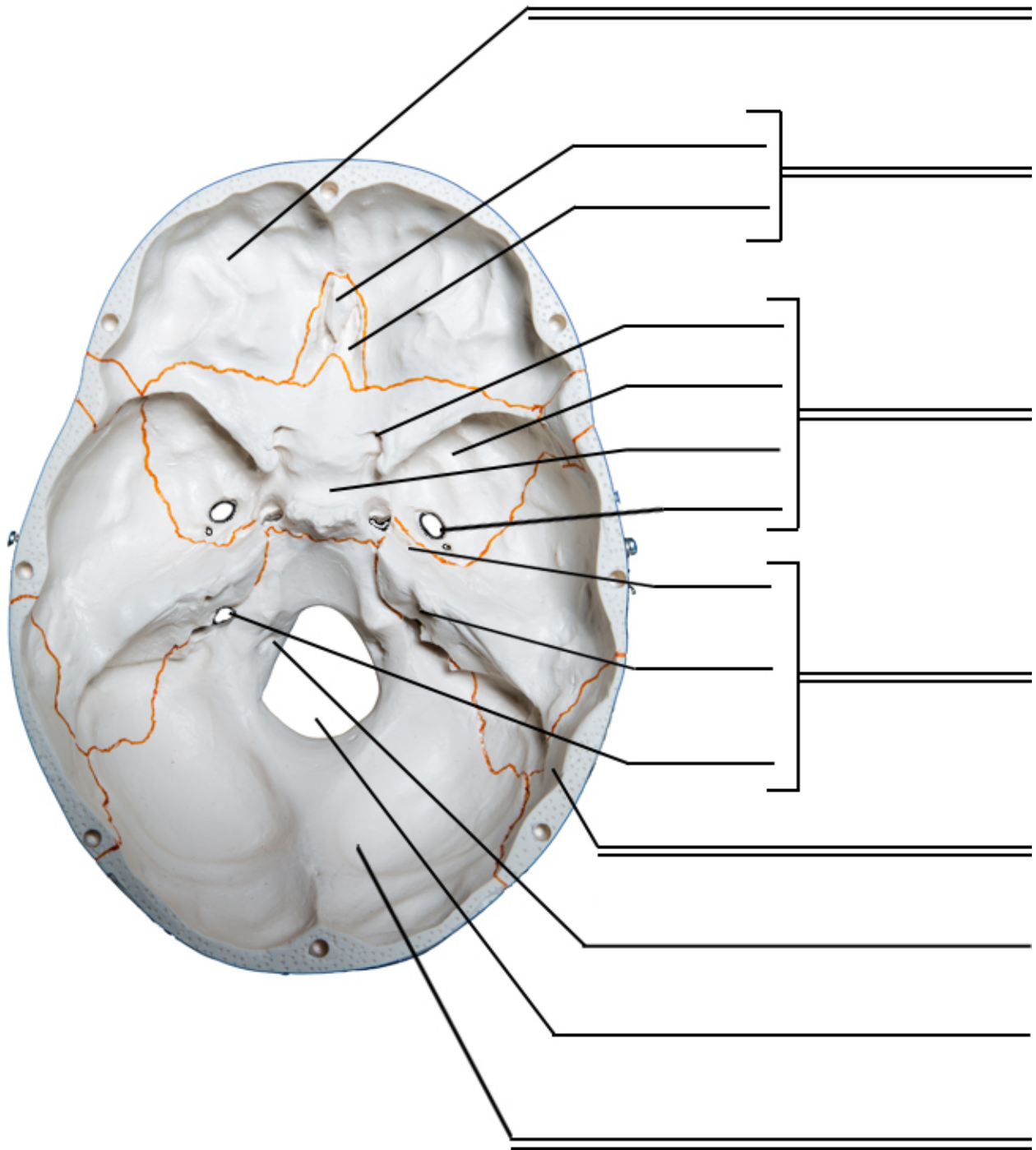
Skull, Right Anterolateral View



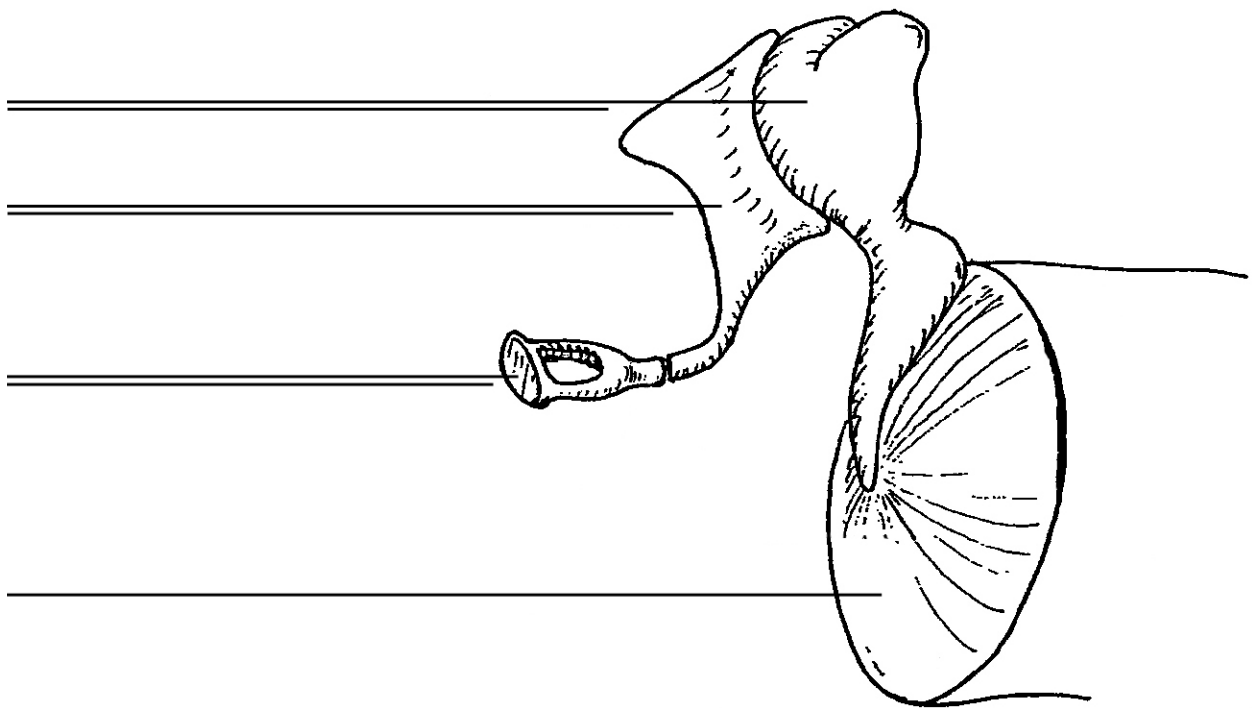
Skull, Anterior View



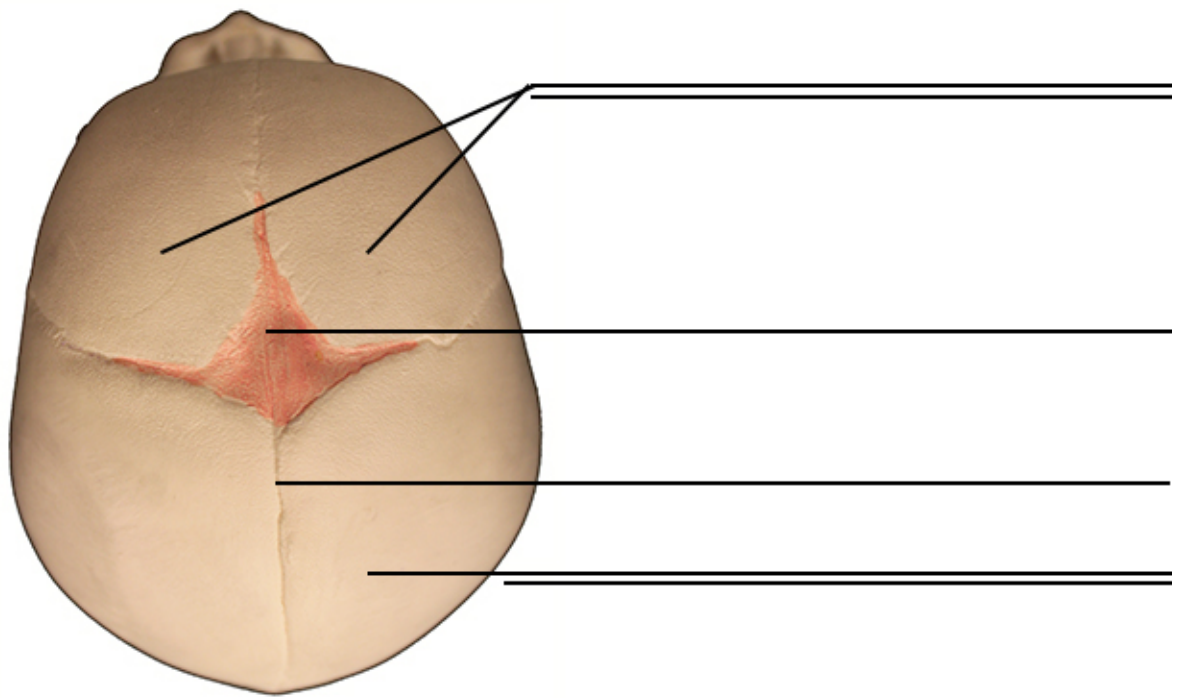
Skull, Inferior View



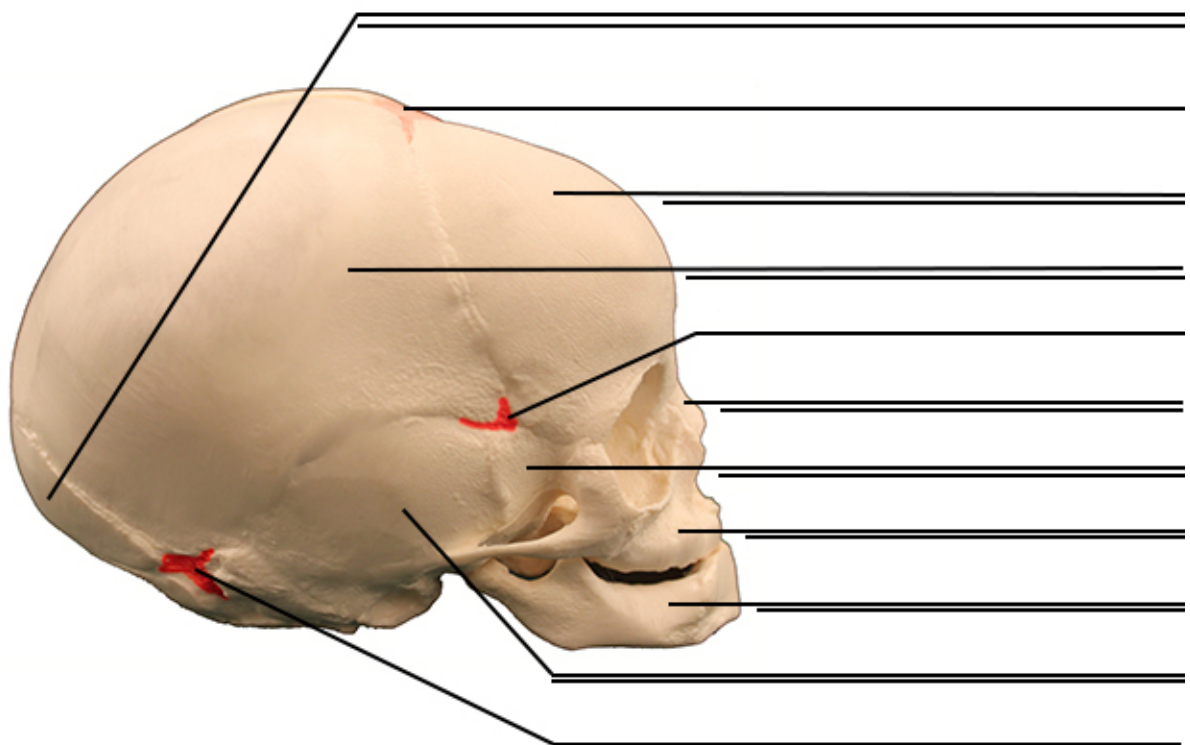
Skull, Interior View



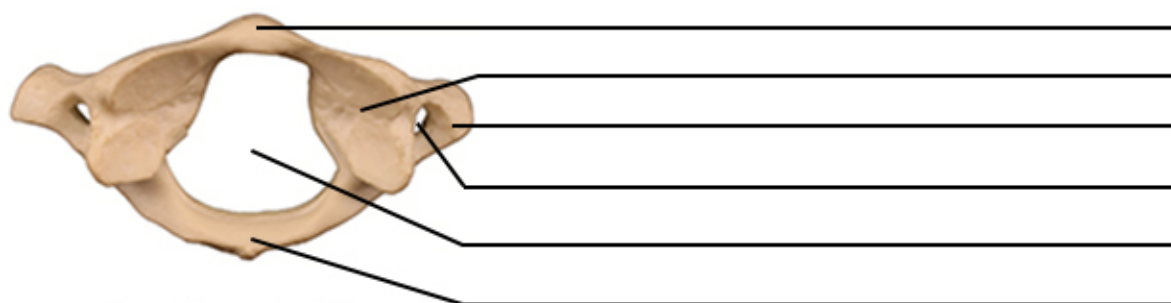
Ossicles of the Middle Ear



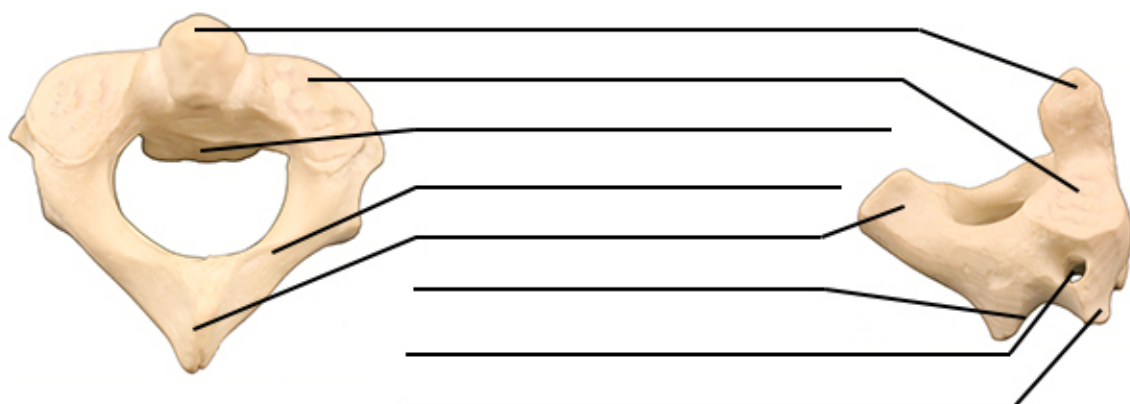
Fetal Skull, Superior View



Fetal Skull, Right Lateral View

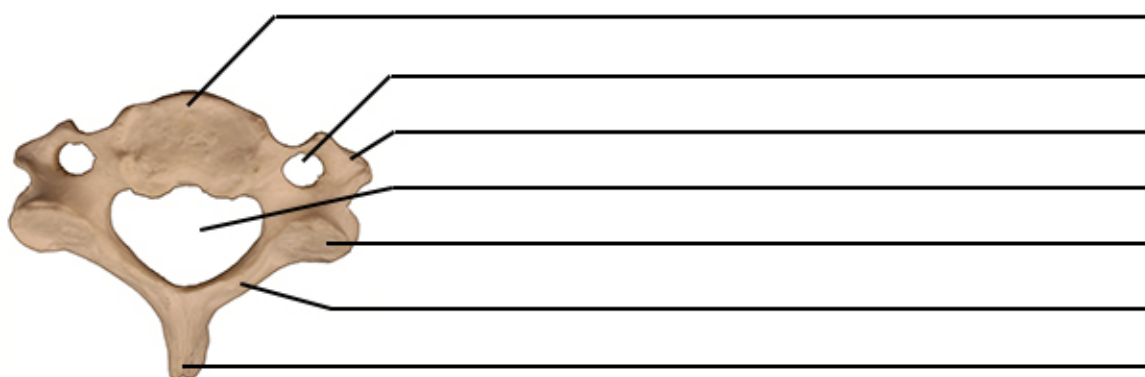


Atlas, Superior View

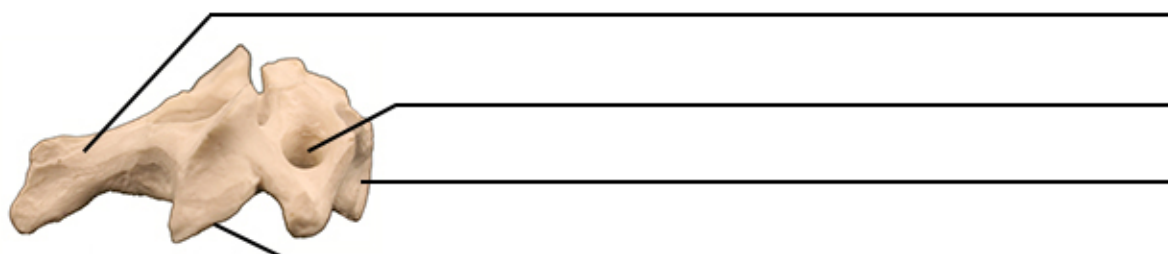


Axis, Posterior Superior View

Axis, Right Lateral View



Cervical Vertebra, Superior View



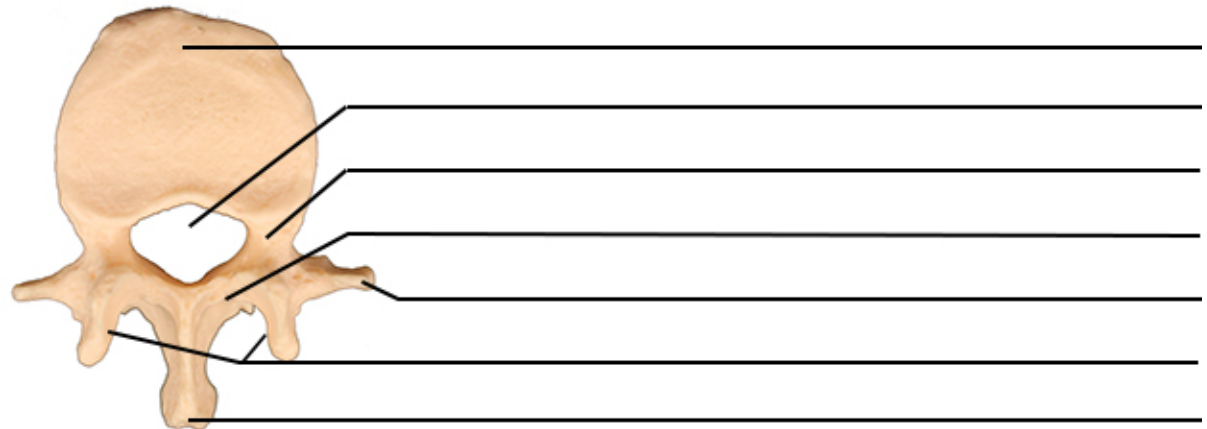
Cervical Vertebra, Right Lateral View



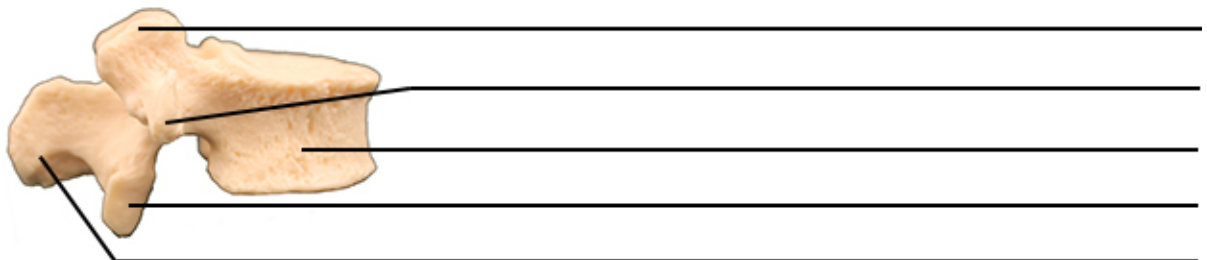
Thoracic Vertebra, Superior View



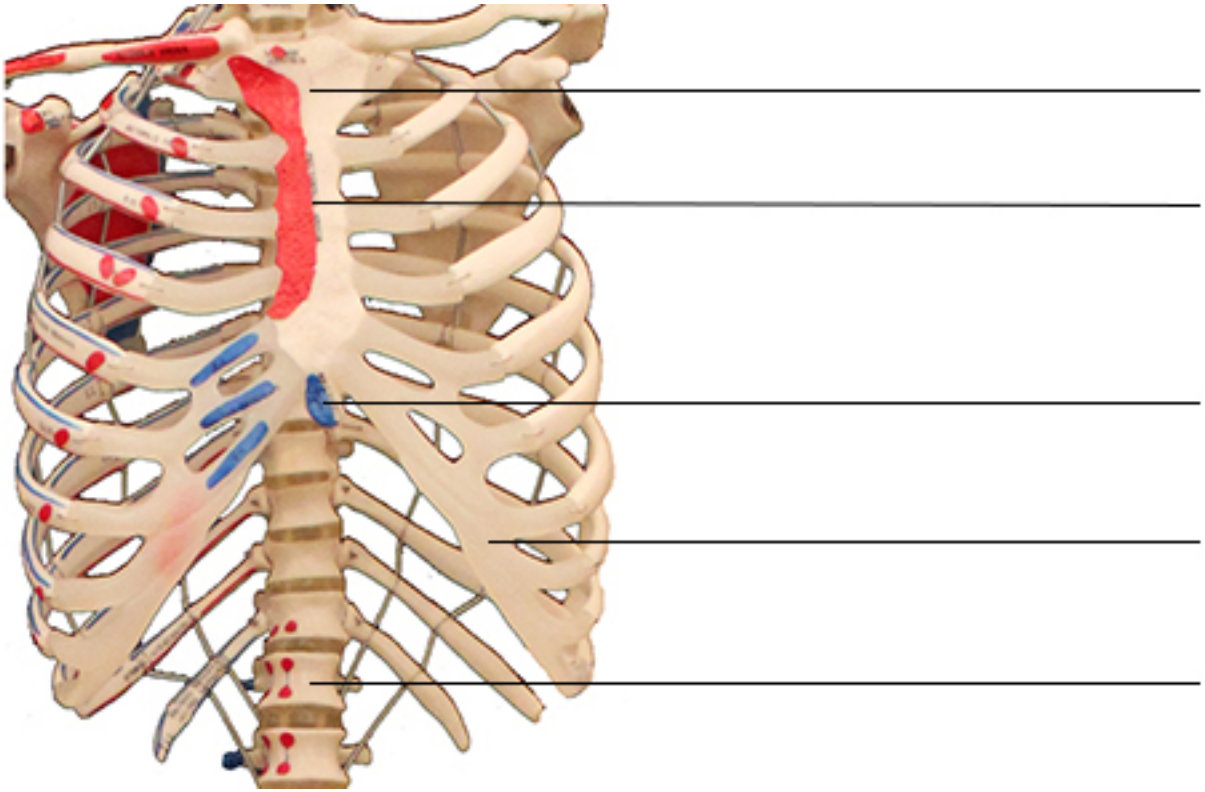
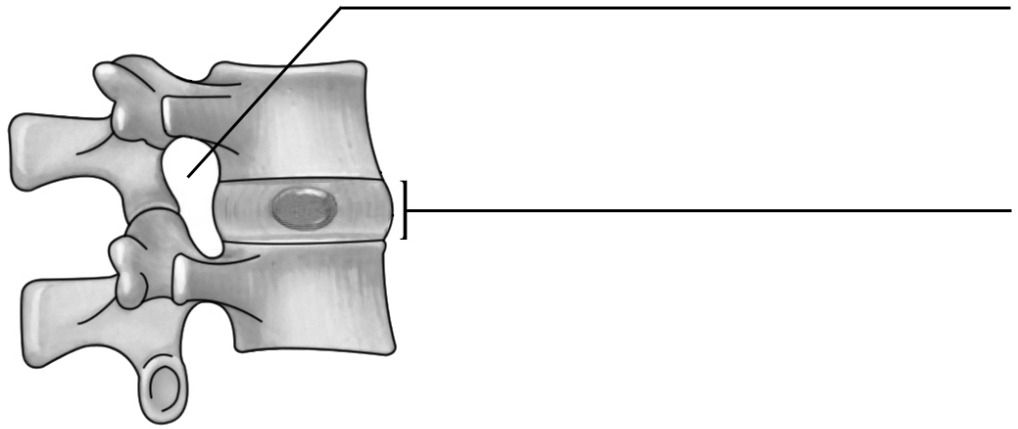
Thoracic Vertebra, Right Lateral View



Lumbar Vertebra, Superior View

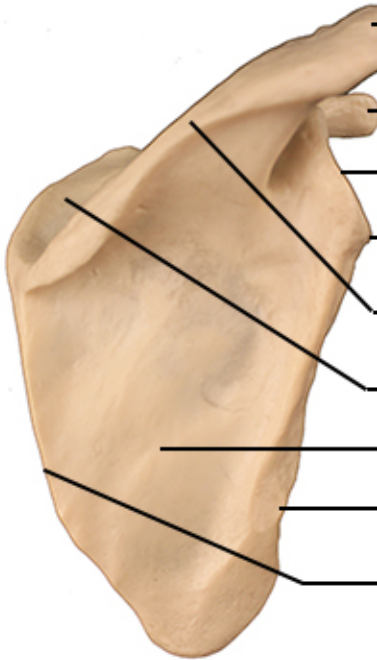


Lumbar Vertebra, Right Lateral View

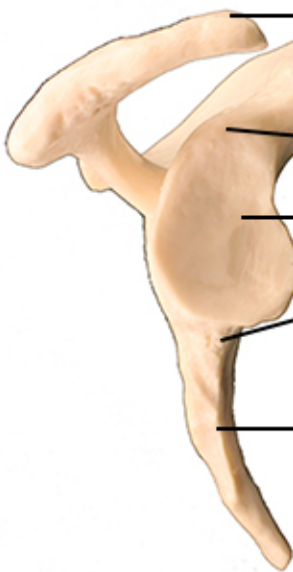




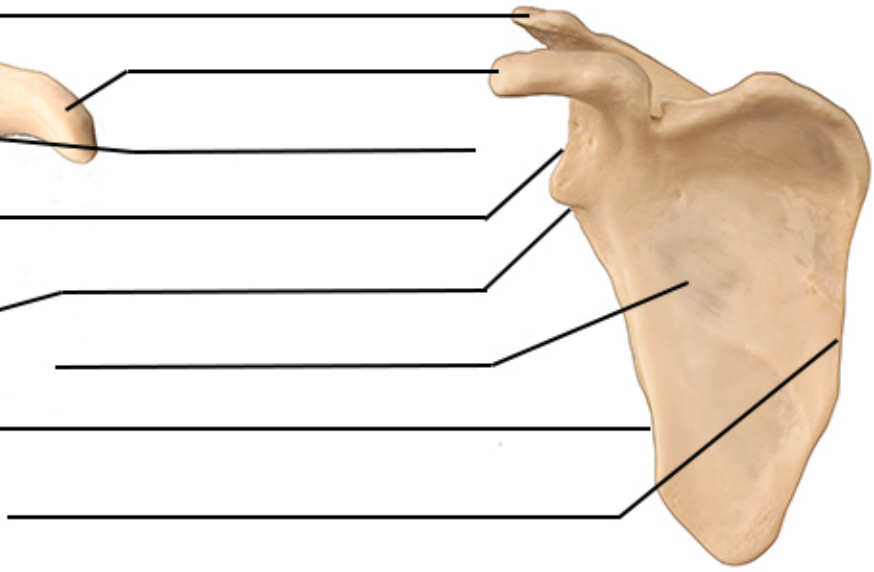
Right Clavicle, Superior View



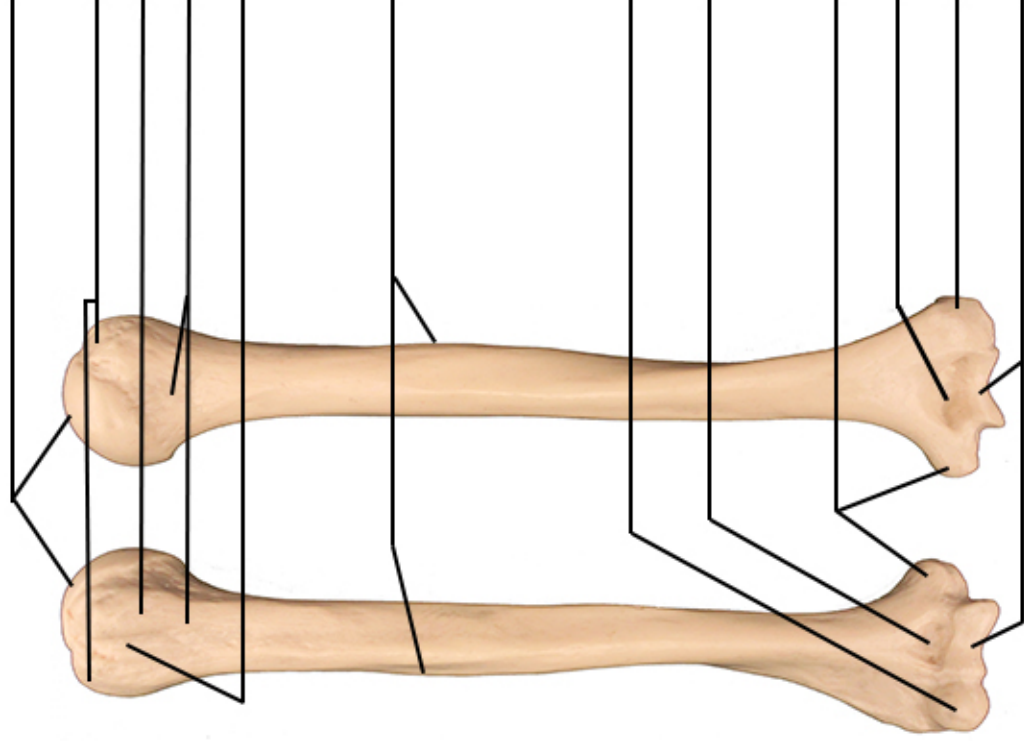
Right Scapula, Posterior View



Right Scapula, Lateral View



Right Scapula, Anterior View



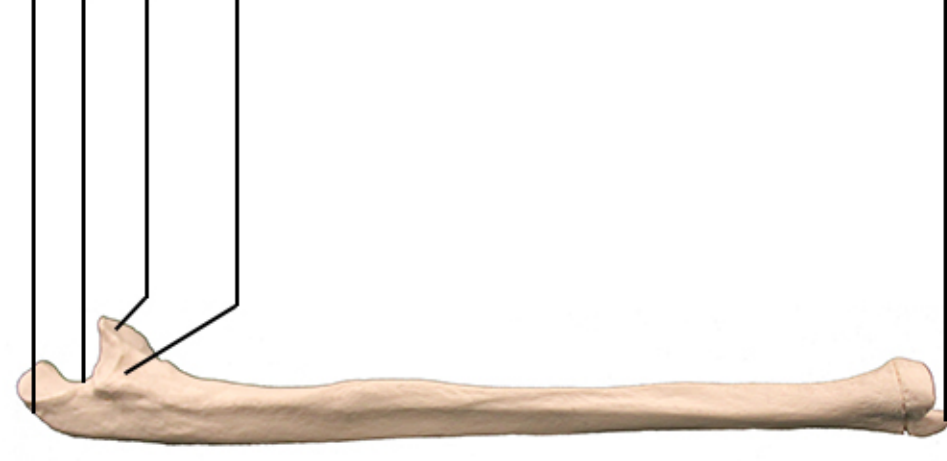
Anterior

Posterior

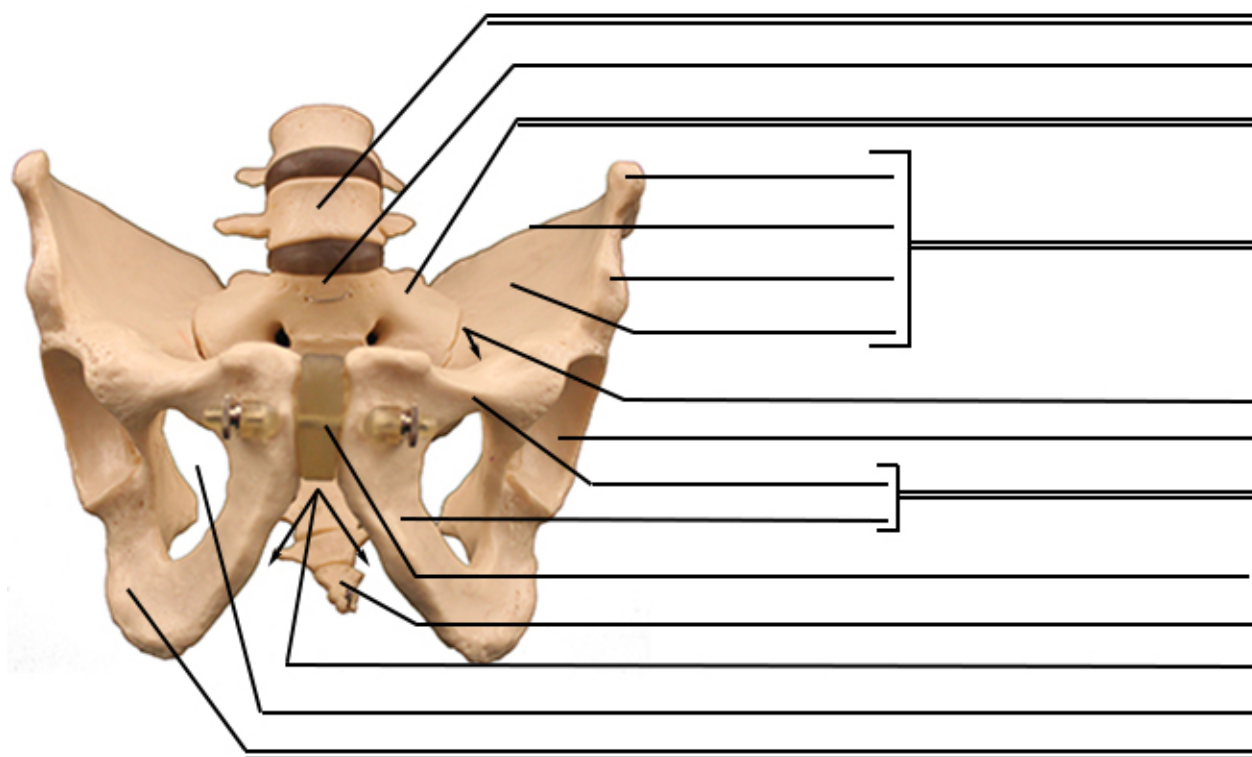
Right Humerus



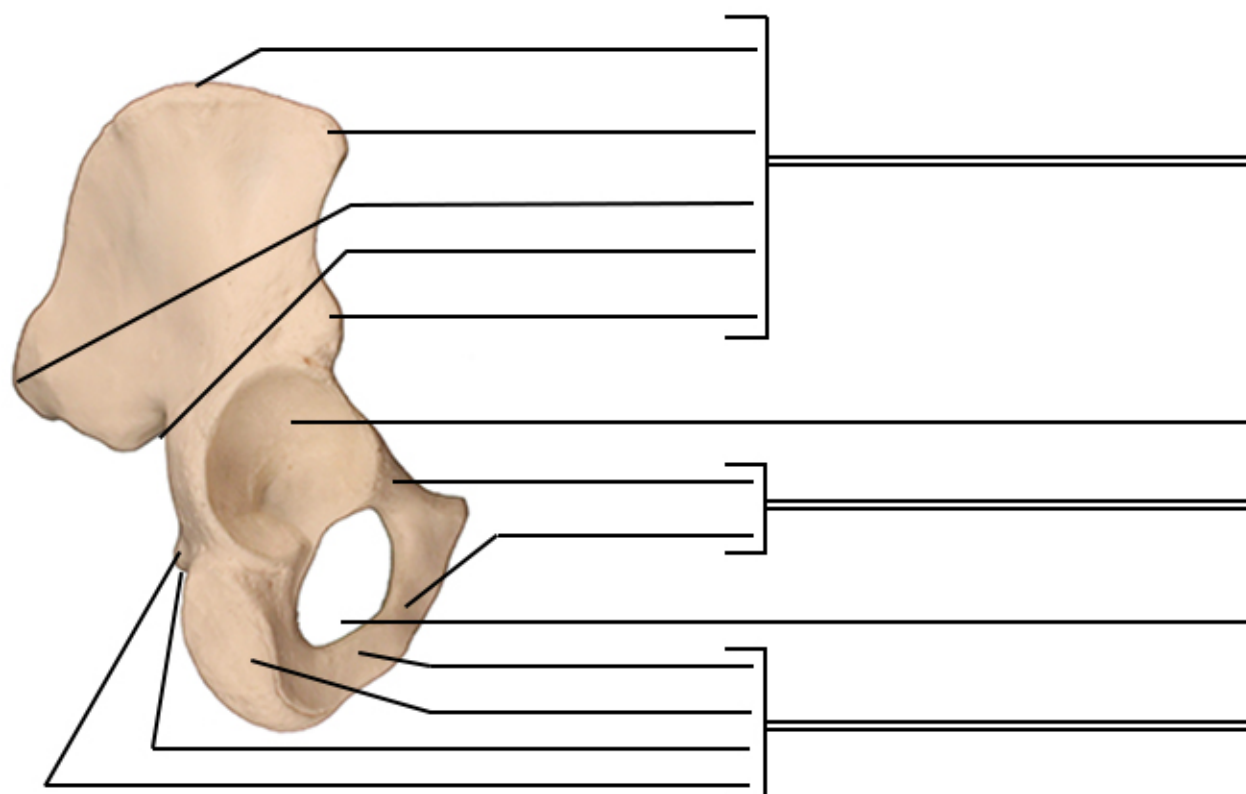
Right Radius,
Anterior View



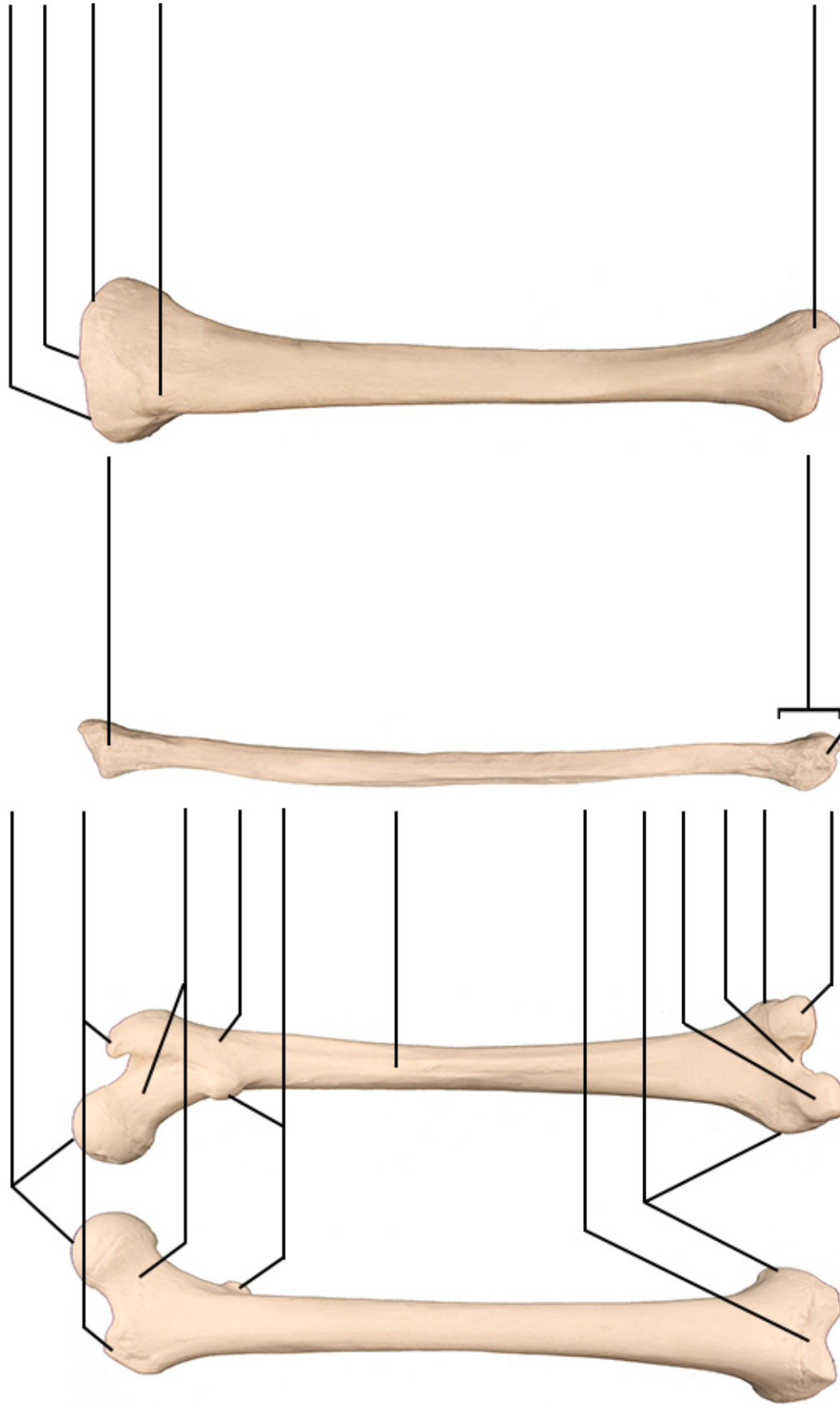
Right Ulna,
Lateral View



Male Pelvis, Anterior View



Right Os Coxa, Posterolateral View



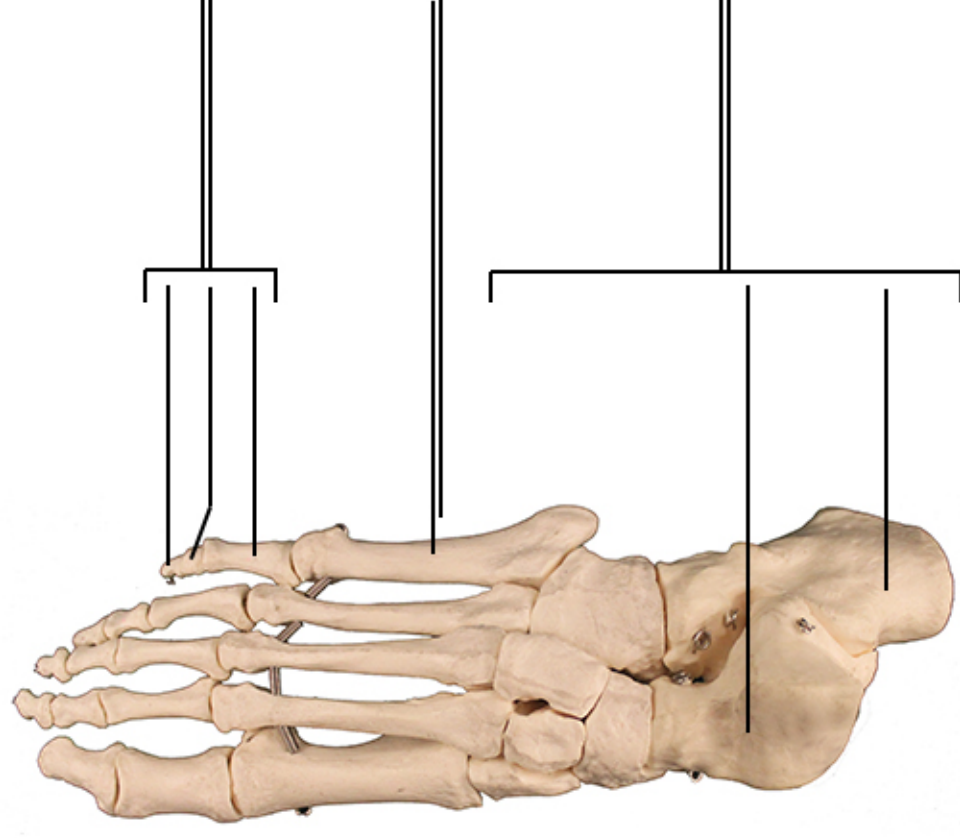
Anterior

Posterior

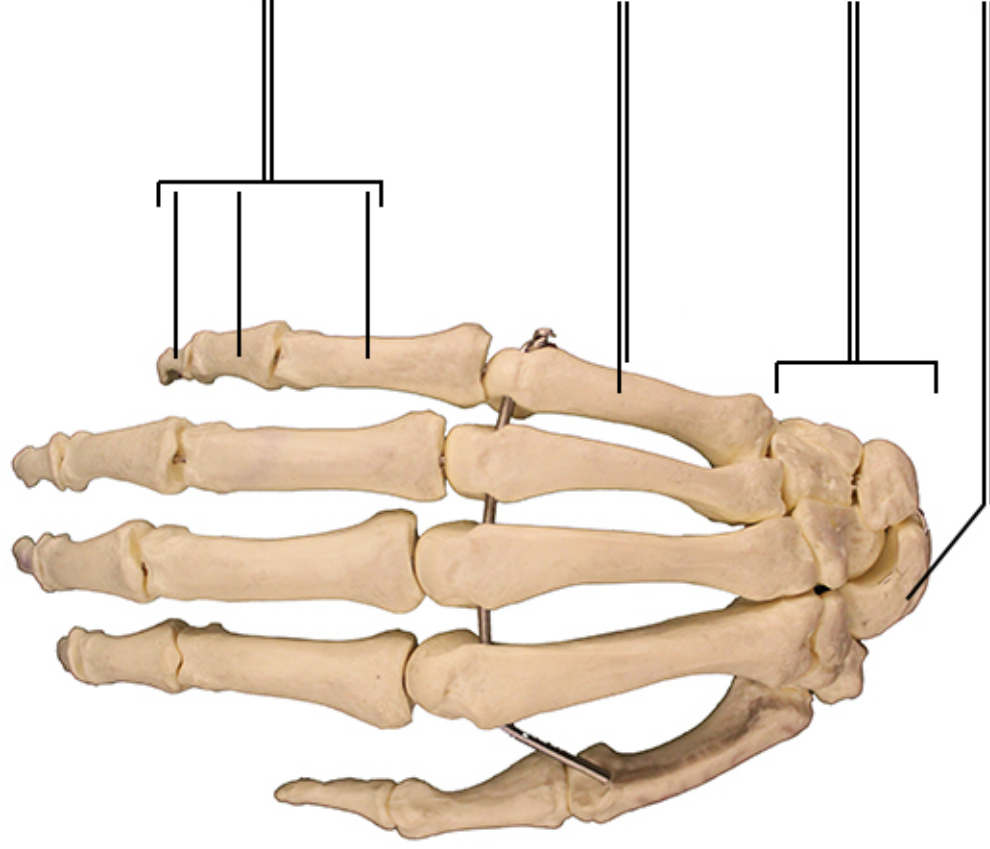
Right Femur

Right Fibula,
Medial View

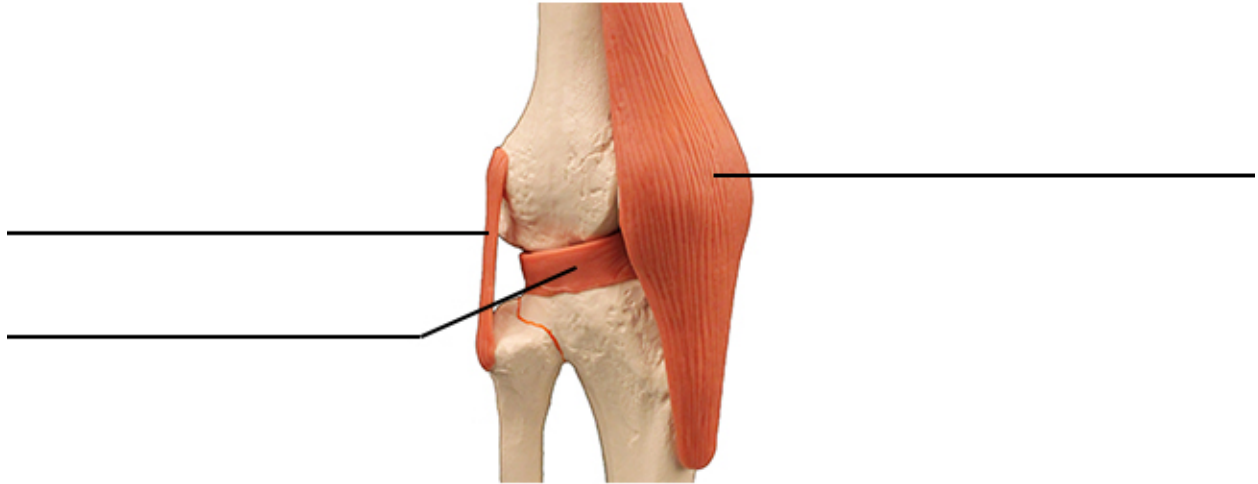
Right Tibia,
Anterior View



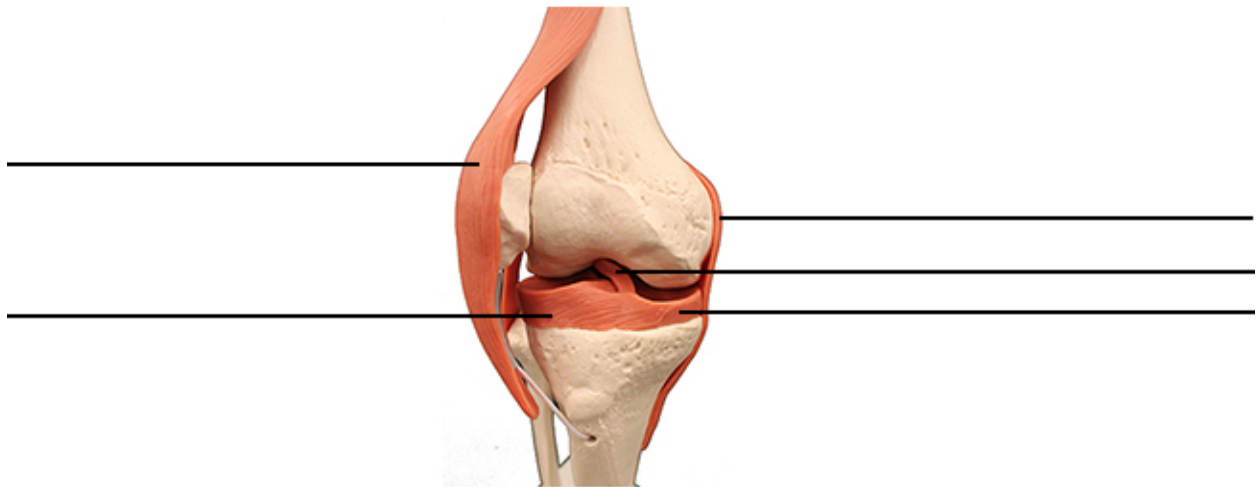
Right Foot, Superior View



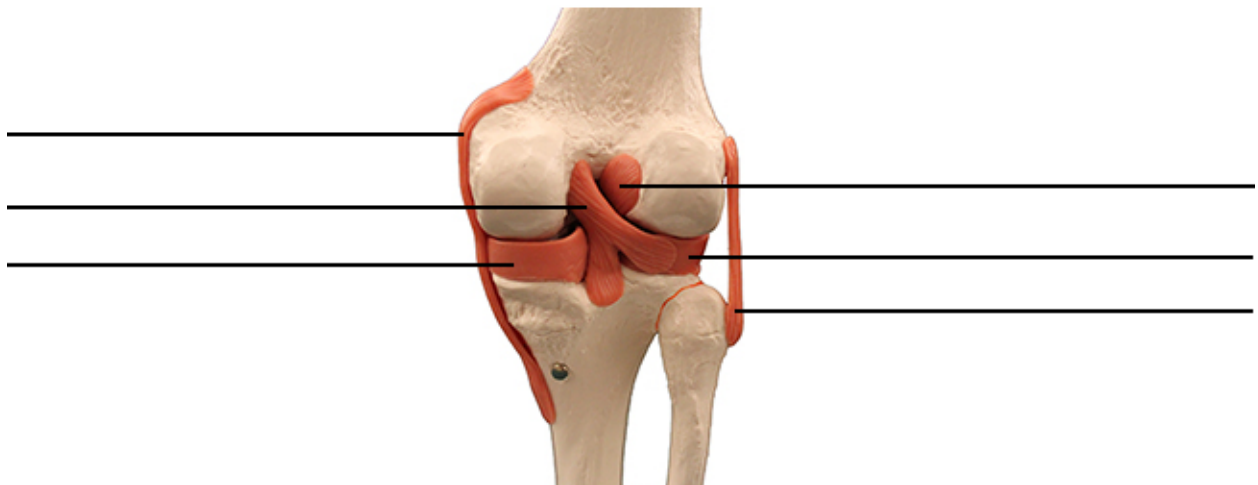
Right Hand, Posterior View



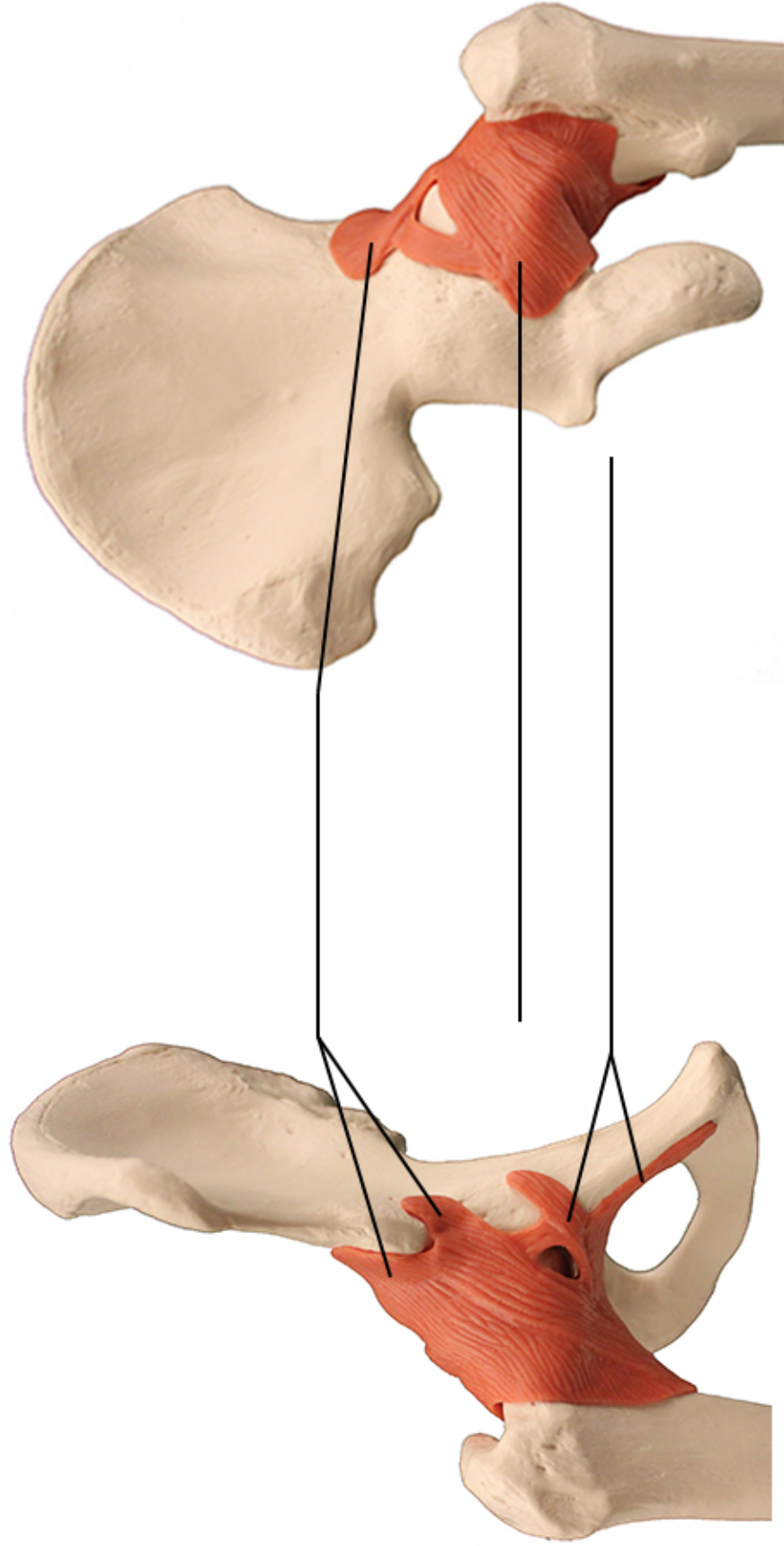
Right Knee, Anterolateral View



Right Knee, Anterior View (Patella Reflected)

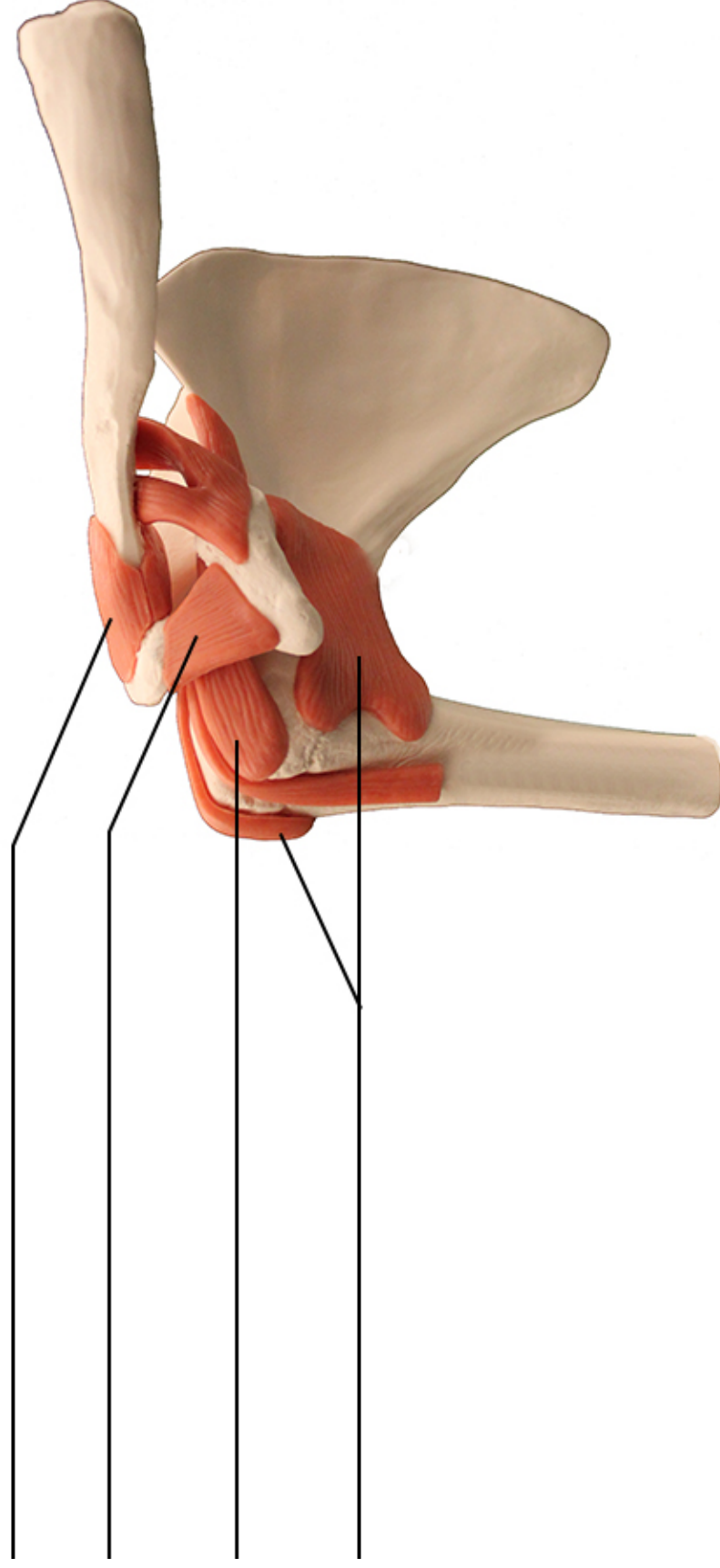


Right Knee, Posterior View



Right Hip (Coxal) Joint
Posterior View

Right Hip (Coxal) Joint
Anterolateral View



Right Shoulder (Glenohumeral) Joint
Anterior View