

MCC Headcount and FTSE Trends by Snapshot, Term and Location

Table of Contents

- 1 - Introduction
- 2-4: Fall Headcount and FTSE by Location and Snapshot
- 5-7: Spring Headcount and FTSE by Location and Snapshot
- 8-10: Summer Headcount and FTSE by Location and Snapshot
- 11-12: MCC Audited FY FTSE

Definitions

BT: Beginning of Term (Saturday after the first full week of classes)

45: 45th Day of class in the Spring or Fall semesters

ET: End of Term

FY: Fiscal Year

FTSE: Full Time Student Equivalents

Basic FTSE: FTSE generated in courses meeting on the 45th day for the Fall or Spring term. Basic FTSE is calculated by dividing total credit hours attempted by 15.

Short-term FTSE: FTSE generated in any classes that do not meet on 45th Day of the Fall or Spring and all Summer term classes.

Open-entry FTSE: FTSE generate in open-entry courses, regardless of when the course is offered.

Short-term and Open-entry FTSE Calculation: The calculation for ST and OE FTSE is different and more complicated. One-half of FTSE credit is earned for each student enrolled when a course begins. The other half of FTSE credit is earned when a student completes a course (e.g. grades of A, B, C, D, F, P, Z). ST and OE FTSE use

FY FTSE: Calculated by taking the average of the Basic 45th day FTSE from the Fall and Spring terms and adding in any short term and open entry FTSE claimed during the fiscal year. Then manual adjustments and audits are conducted to finalize the college's official FY FTSE.

Notes

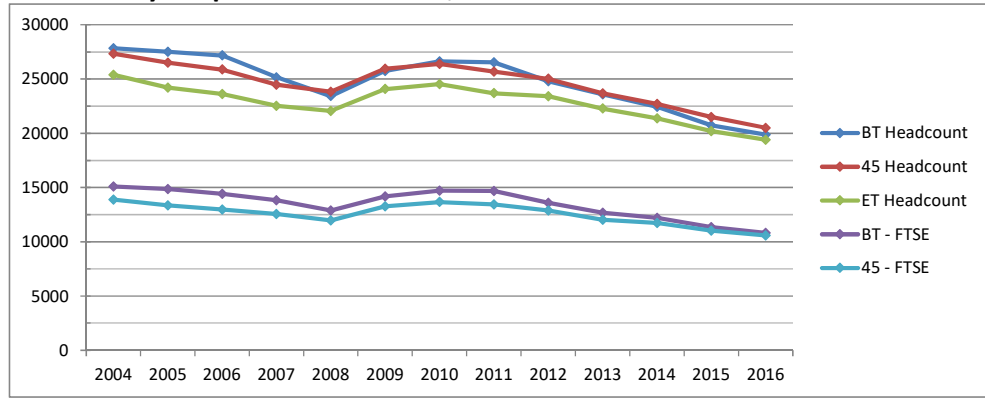
FTSE on the Fall, Spring and Summer pages of this report is **unofficial** based on student class records in the institutional research information system. Official Audited FY FTSE is provided on the last page; the official numbers include manual adjustments made by A&R and adjustments from district auditors. Official Audited FTSE is only established for the college as a whole.

Headcount and Basic FTSE Trends by Snapshot and Location
FALL 2004-2016

All MCC Headcount and Basic FTSE Trends by Snapshot and Location, FALL 2004-2016

Year	BT Headcount	45 Headcount	ET Headcount
2004	27833	27331	25398
2005	27525	26526	24226
2006	27178	25881	23636
2007	25167	24469	22523
2008	23433	23825	22054
2009	25743	25960	24081
2010	26624	26408	24549
2011	26532	25695	23698
2012	24812	25024	23416
2013	23596	23678	22281
2014	22446	22711	21384
2015	20722	21491	20204
2016	19889	20508	19397

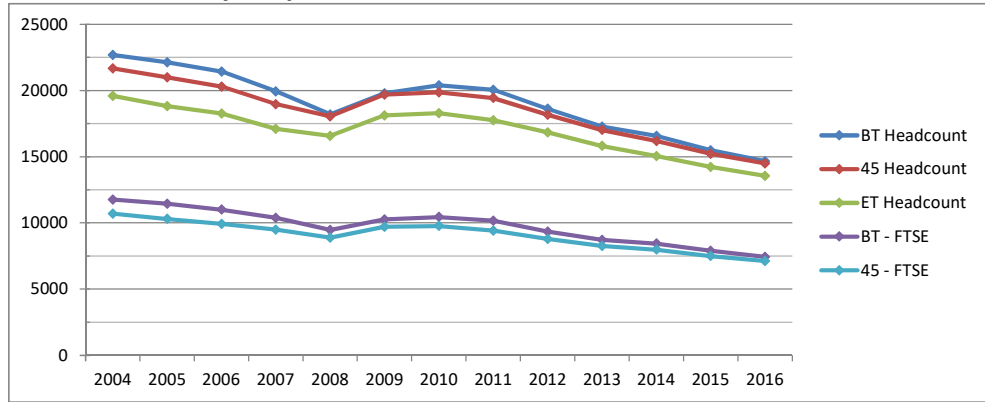
BT - FTSE	45 - FTSE	Year
15109.3	13899.9	2004
14854.4	13352.4	2005
14429.0	12977.8	2006
13824.8	12556.5	2007
12898.1	11981.0	2008
14184.1	13274.6	2009
14722.6	13668.5	2010
14675.7	13442.6	2011
13603.8	12880.5	2012
12693.6	12026.1	2013
12215.1	11738.2	2014
11366.2	11019.2	2015
10832.0	10576.2	2016



Southern & Dobson Headcount and Basic FTSE Trends by Snapshot and Location, FALL 2004-2016

Year	BT Headcount	45 Headcount	ET Headcount
2004	22706	21689	19599
2005	22137	21010	18836
2006	21442	20306	18269
2007	19952	18975	17121
2008	18210	18052	16582
2009	19807	19709	18137
2010	20413	19870	18306
2011	20066	19450	17777
2012	18625	18174	16849
2013	17291	17033	15820
2014	16575	16206	15065
2015	15490	15224	14232
2016	14665	14494	13557

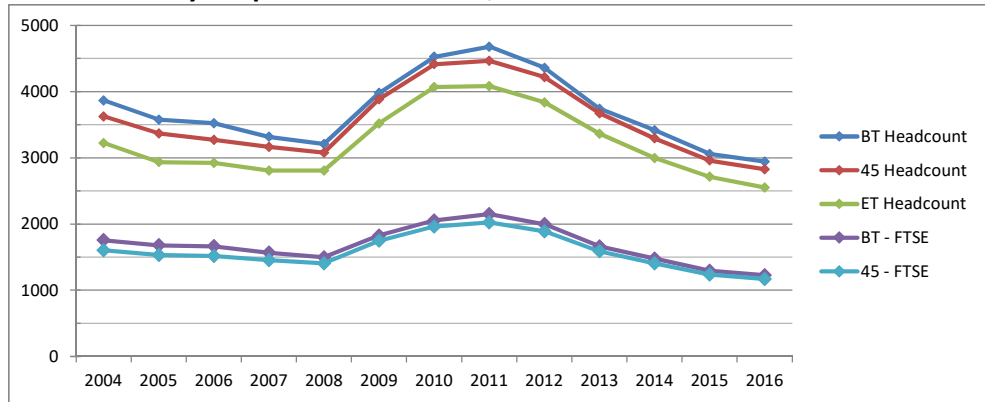
BT - FTSE	45 - FTSE	Year
11771.1	10698.2	2004
11456.2	10310.7	2005
11010.2	9935.7	2006
10399.9	9496.7	2007
9484.6	8903.5	2008
10270.7	9725.9	2009
10457.3	9779.6	2010
10173.1	9422.4	2011
9357.0	8800.1	2012
8727.6	8260.7	2013
8446.4	7991.4	2014
7911.3	7503.4	2015
7443.5	7135.3	2016



Red Mountain Headcount and Basic FTSE Trends by Snapshot and Location, FALL 2004-2016

Year	BT Headcount	45 Headcount	ET Headcount
2004	3869	3628	3226
2005	3577	3371	2938
2006	3526	3273	2926
2007	3319	3166	2808
2008	3210	3080	2809
2009	3982	3886	3521
2010	4528	4417	4070
2011	4681	4468	4085
2012	4363	4221	3838
2013	3743	3674	3366
2014	3419	3296	2997
2015	3060	2962	2715
2016	2946	2830	2552

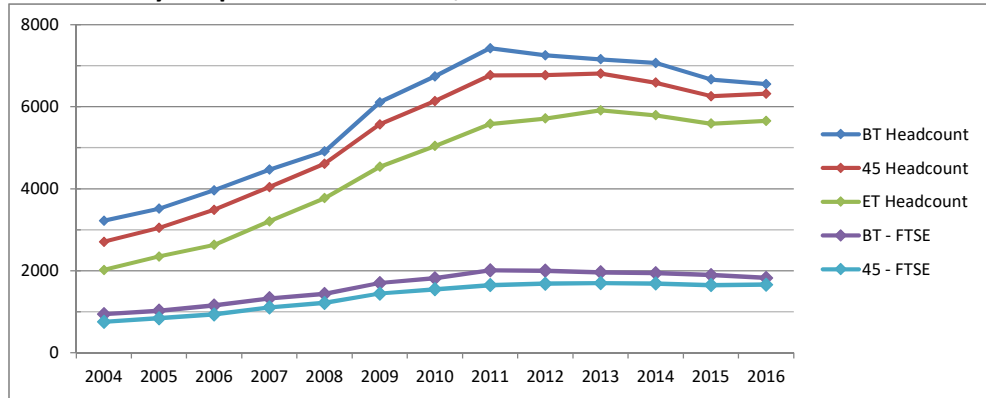
BT - FTSE	45 - FTSE	Year
1757.6	1605.3	2004
1681.2	1532.1	2005
1666.0	1517.1	2006
1568.9	1454.6	2007
1497.9	1408.7	2008
1829.1	1748.1	2009
2054.1	1964.4	2010
2151.4	2026.5	2011
1999.5	1890.1	2012
1662.2	1588.0	2013
1478.8	1406.2	2014
1297.5	1239.3	2015
1226.3	1171.7	2016



Internet Headcount and Basic FTSE Trends by Snapshot and Location, FALL 2004-2016

Year	BT Headcount	45 Headcount	ET Headcount
2004	3219	2709	2021
2005	3515	3046	2347
2006	3965	3486	2632
2007	4467	4041	3207
2008	4912	4610	3773
2009	6109	5570	4538
2010	6744	6143	5044
2011	7431	6769	5583
2012	7258	6776	5715
2013	7161	6811	5911
2014	7073	6592	5794
2015	6668	6259	5590
2016	6555	6323	5659

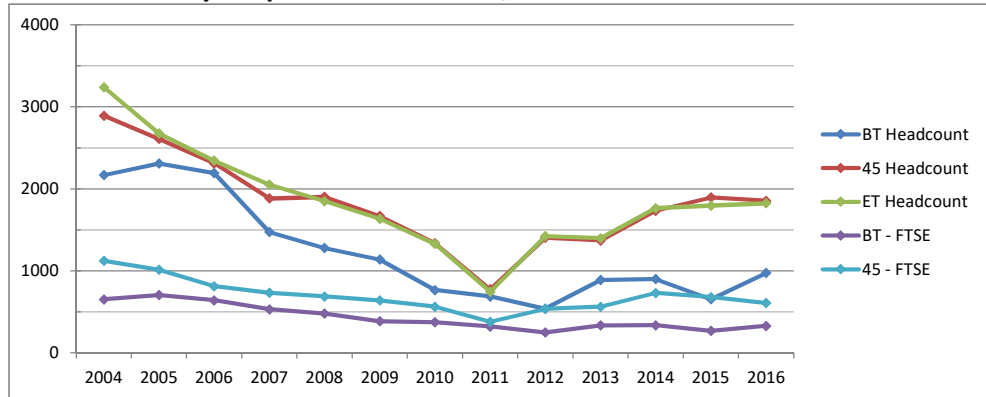
BT - FTSE	45 - FTSE	Year
940.1	753.3	2004
1024.7	839.7	2005
1155.3	932.9	2006
1329.2	1105.1	2007
1432.9	1215.1	2008
1699.7	1440.2	2009
1815.3	1548.0	2010
2010.9	1648.5	2011
2001.9	1686.3	2012
1961.8	1694.5	2013
1943.1	1686.9	2014
1893.1	1650.0	2015
1824.8	1662.4	2016



Other Locations Headcount and Basic FTSE Trends by Snapshot and Location, FALL 2004-2016

Year	BT Headcount	45 Headcount	ET Headcount
2004	2168	2891	3239
2005	2309	2608	2674
2006	2191	2309	2343
2007	1473	1883	2050
2008	1277	1903	1850
2009	1136	1667	1634
2010	764	1336	1329
2011	686	774	745
2012	538	1403	1421
2013	888	1370	1396
2014	899	1732	1763
2015	653	1895	1795
2016	974	1853	1823

BT - FTSE	45 - FTSE	Year
650.7	1122.2	2004
703.3	1011.5	2005
639.1	810.7	2006
530.5	731.7	2007
477.9	686.5	2008
384.5	637.4	2009
372.9	560.7	2010
319.8	378.6	2011
247.6	535.3	2012
333.8	561.8	2013
334.7	729.3	2014
266.4	677.7	2015
327.6	606.9	2016



"Other" Locations include HS Dual, Downtown Center, Boswell Hospital (Pre-2014), Williams-Gateway Center (pre-2017) and any class site not at an MCC property.

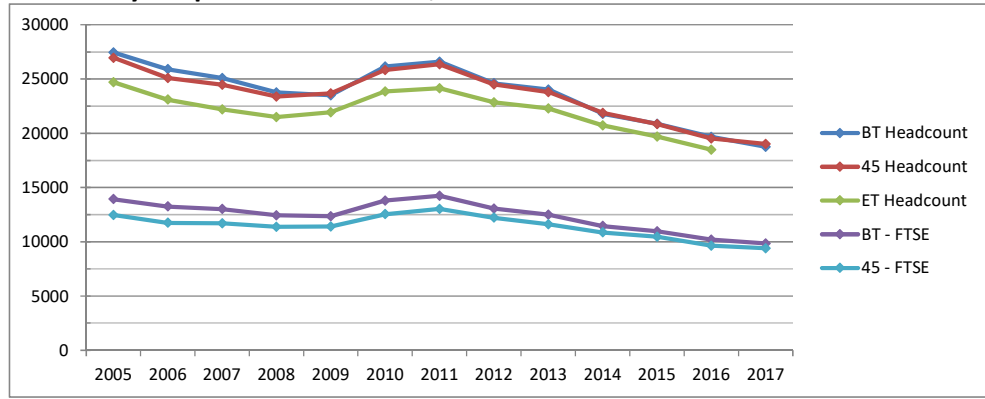
Note: Prior to 2011, HS Dual was coded as Open-Entry FTSE. This OE FTSE was added into this trend for consistency of the trend line.

Headcount and Basic FTSE Trends by Snapshot and Location
Spring 2005-2017

All MCC Headcount and Basic FTSE Trends by Snapshot and Location, SPRING 2005-2017

Year	BT Headcount	45 Headcount	ET Headcount
2005	27459	26963	24716
2006	25910	25094	23108
2007	25097	24469	22218
2008	23760	23381	21509
2009	23514	23672	21932
2010	26167	25839	23863
2011	26590	26367	24152
2012	24611	24506	22856
2013	24044	23789	22308
2014	21790	21878	20736
2015	20882	20842	19691
2016	19665	19514	18481
2017	18762	19013	

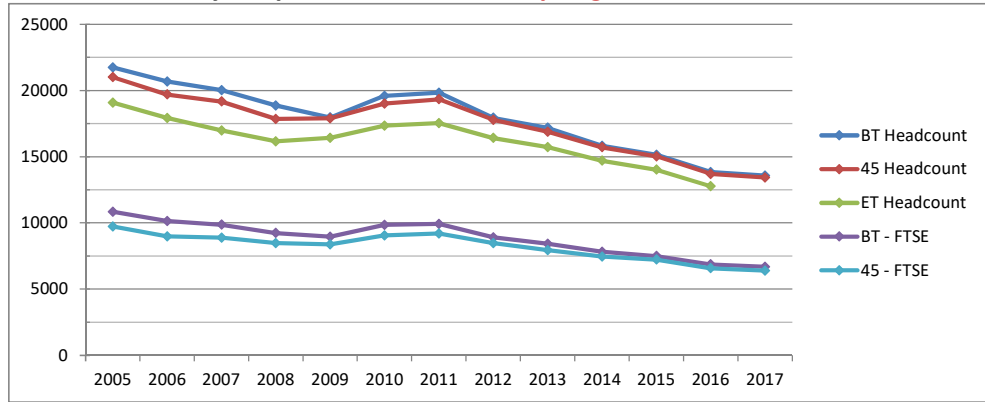
BT - FTSE	45 - FTSE	Year
13934.1	12476.4	2005
13257.6	11750.8	2006
13020.2	11707.0	2007
12450.5	11373.4	2008
12357.4	11424.2	2009
13812.0	12547.2	2010
14242.0	13021.8	2011
13071.0	12222.6	2012
12492.6	11630.3	2013
11457.0	10869.1	2014
10972.5	10459.2	2015
10198.4	9654.3	2016
9839.4	9400.6	2017



Southern & Dobson Headcount and Basic FTSE Trends by Snapshot and Location, Spring 2005-2017

Year	BT Headcount	45 Headcount	ET Headcount
2005	21758	21018	19093
2006	20700	19716	17930
2007	20049	19181	16996
2008	18877	17860	16168
2009	17974	17913	16434
2010	19604	19021	17358
2011	19843	19352	17546
2012	17950	17784	16426
2013	17200	16895	15731
2014	15836	15725	14708
2015	15149	15038	14034
2016	13858	13699	12778
2017	13575	13445	

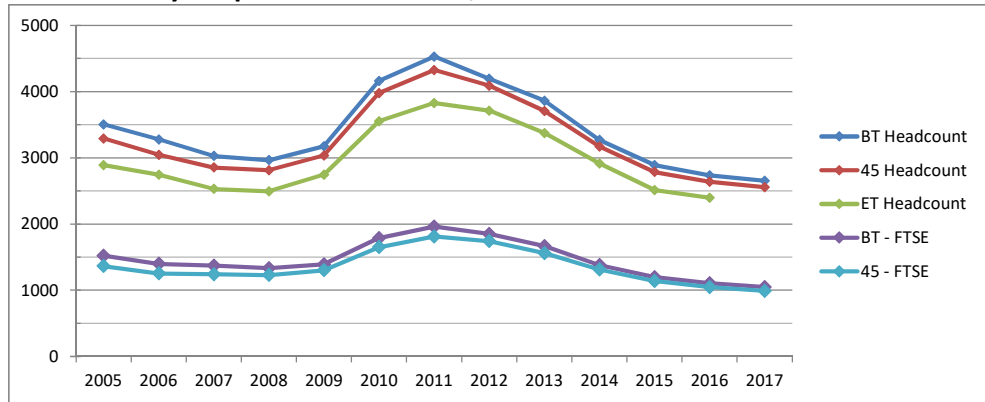
BT - FTSE	45 - FTSE	Year
10857.5	9740.1	2005
10160.3	8995.9	2006
9875.7	8902.3	2007
9244.0	8494.0	2008
8973.3	8392.7	2009
9859.0	9066.1	2010
9934.4	9213.1	2011
8919.9	8479.8	2012
8430.2	7955.1	2013
7836.7	7471.0	2014
7508.4	7243.0	2015
6880.0	6587.6	2016
6689.7	6394.3	2017



Red Mountain Headcount and Basic FTSE Trends by Snapshot and Location, SPRING 2005-2017

Year	BT Headcount	45 Headcount	ET Headcount
2005	3507	3294	2890
2006	3278	3045	2745
2007	3030	2855	2532
2008	2966	2814	2494
2009	3178	3037	2748
2010	4162	3980	3553
2011	4532	4329	3831
2012	4195	4090	3712
2013	3862	3707	3376
2014	3271	3172	2915
2015	2890	2788	2515
2016	2736	2640	2399
2017	2654	2557	

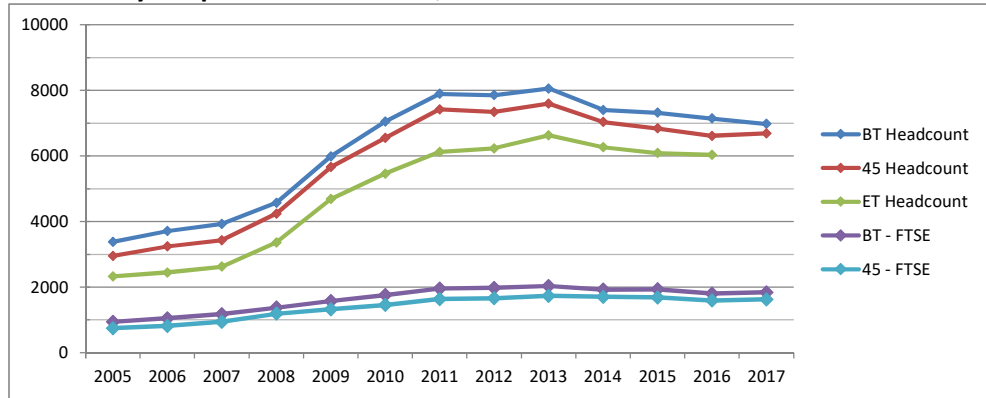
BT - FTSE	45 - FTSE	Year
1522.2	1365.3	2005
1399.5	1255.7	2006
1374.9	1243.8	2007
1333.3	1230.7	2008
1393.7	1304.0	2009
1788.7	1651.1	2010
1961.9	1813.6	2011
1850.7	1743.7	2012
1669.5	1560.8	2013
1380.8	1313.7	2014
1198.4	1142.7	2015
1107.7	1048.3	2016
1047.2	988.8	2017



Internet Headcount and Basic FTSE Trends by Snapshot and Location, SPRING 2005-2017

Year	BT Headcount	45 Headcount	ET Headcount
2005	3377	2949	2324
2006	3712	3241	2445
2007	3931	3434	2627
2008	4575	4245	3366
2009	5987	5662	4686
2010	7055	6552	5461
2011	7895	7423	6123
2012	7856	7346	6235
2013	8057	7598	6634
2014	7405	7039	6266
2015	7322	6843	6093
2016	7145	6616	6034
2017	6981	6692	

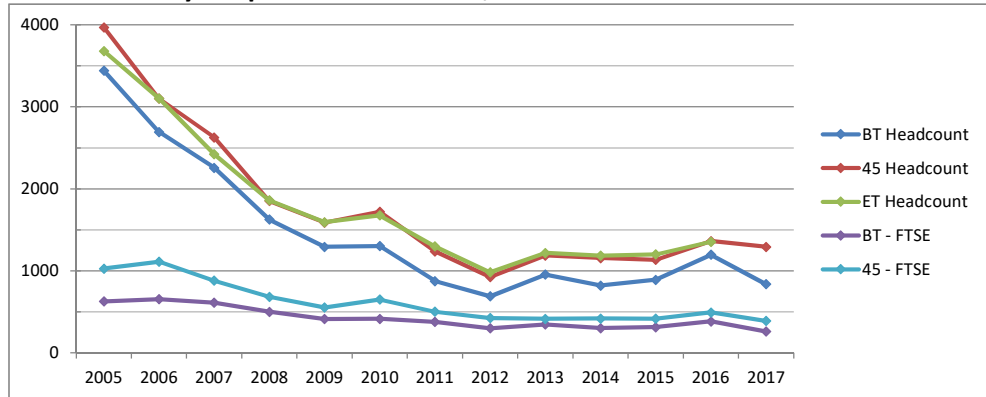
BT - FTSE	45 - FTSE	Year
940.0	750.8	2005
1049.5	815.5	2006
1180.8	942.9	2007
1379.3	1191.5	2008
1577.3	1325.5	2009
1759.5	1456.6	2010
1957.1	1639.3	2011
1975.9	1660.2	2012
2035.2	1736.5	2013
1924.8	1705.3	2014
1933.4	1683.1	2015
1801.8	1594.8	2016
1843.7	1629.5	2017



Other Locations Headcount and Basic FTSE Trends by Snapshot and Location, SPRING 2005-2017

Year	BT Headcount	45 Headcount	ET Headcount
2005	3442	3969	3679
2006	2693	3100	3103
2007	2256	2626	2422
2008	1625	1851	1860
2009	1291	1588	1592
2010	1300	1720	1676
2011	874	1236	1298
2012	689	925	981
2013	954	1185	1217
2014	819	1154	1183
2015	890	1133	1200
2016	1196	1361	1353
2017	836	1291	

BT - FTSE	45 - FTSE	Year
626.5	1025.4	2005
653.4	1111.6	2006
609.2	880.4	2007
498.8	683.1	2008
411.6	552.3	2009
412.5	648.8	2010
375.6	501.6	2011
296.8	423.2	2012
344.6	412.7	2013
299.5	416.1	2014
312.2	415.5	2015
382.2	490.5	2016
260.5	387.9	2017



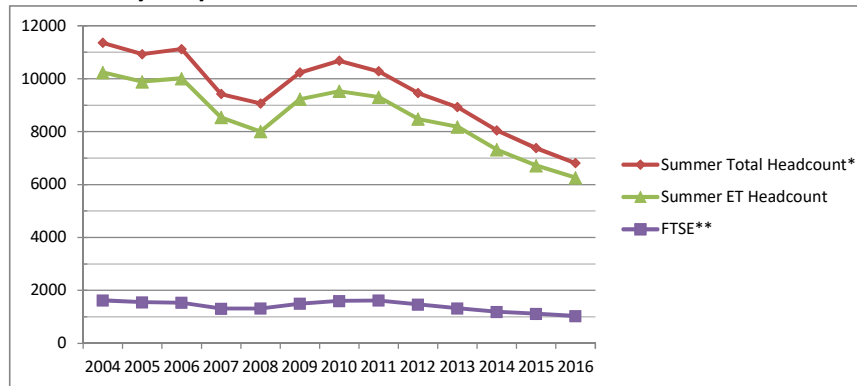
"Other" Locations include HS Dual, Downtown Center, Boswell Hospital (Pre-2014), Williams-Gateway Center (pre-2017) and any class site not at an MCC property.

Note: Prior to 2011, HS Dual was coded as Open-Entry FTSE. This OE FTSE was added into this trend for consistency of the trend line.

Headcount and Basic FTSE Trends by Snapshot and Location
Summer 2004-2016

All MCC Headcount and FTSE Trends by Snapshot and Location, SUMMER 2004-2016

Year	Summer Total Headcount*	Summer ET Headcount	FTSE**
2004	11354	10239	1,623.7
2005	10930	9889	1,554.7
2006	11121	10010	1,536.6
2007	9422	8537	1,312.6
2008	9066	8011	1,319.1
2009	10231	9233	1,497.1
2010	10683	9529	1,601.9
2011	10283	9308	1,616.6
2012	9460	8483	1,467.0
2013	8926	8181	1,325.9
2014	8047	7315	1,191.3
2015	7382	6719	1,119.7
2016	6809	6257	1,026.4

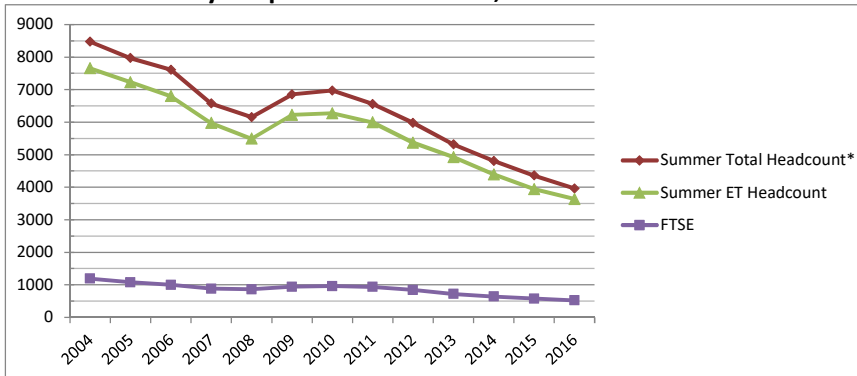


*Due to variable course start dates, there is no "Beginning of Term" snapshot for summer. The "Summer Total Headcount" column includes all students who enrolled in a Summer term course, including withdrawals but excluding drops. In contrast, the "Summer ET Headcount" column only counts students who completed a course with a grade

**Since the summer term splits the fiscal year, about half of summer FTSE for each FY is earned from the prior year's summer term since most courses start in one FY and end in another. Rather than splitting Summer FTSE based on FY like the official audited FTSE on the last page of this report, this page shows FTSE for each entire Summer term regardless of course start/end date. Finally, Summer FTSE is reported on an annualized basis, with total credit hours divided by 30.

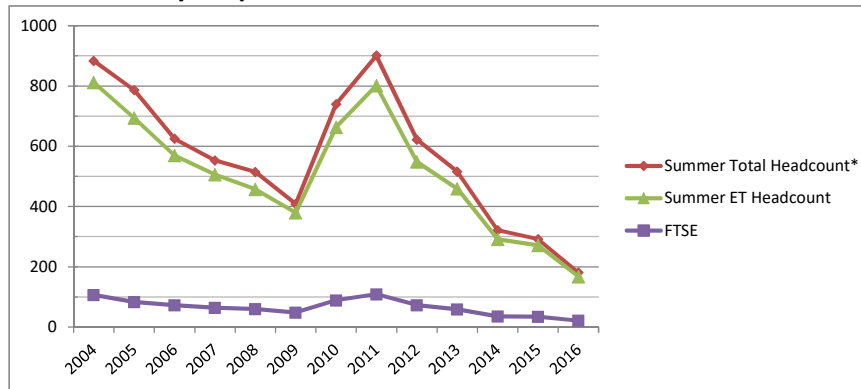
Southern & Dobson Headcount and FTSE Trends by Snapshot and Location, SUMMER 2004-2016

Year	Summer Total Headcount*	Summer ET Headcount	FTSE
2004	8473	7656	1,192.4
2005	7970	7227	1,078.9
2006	7611	6797	998.5
2007	6572	5972	882.1
2008	6152	5491	864.8
2009	6855	6221	942.2
2010	6971	6274	962.8
2011	6556	5991	937.5
2012	5978	5370	846.1
2013	5318	4925	721.2
2014	4810	4393	641.6
2015	4359	3941	580.4
2016	3964	3638	523.7



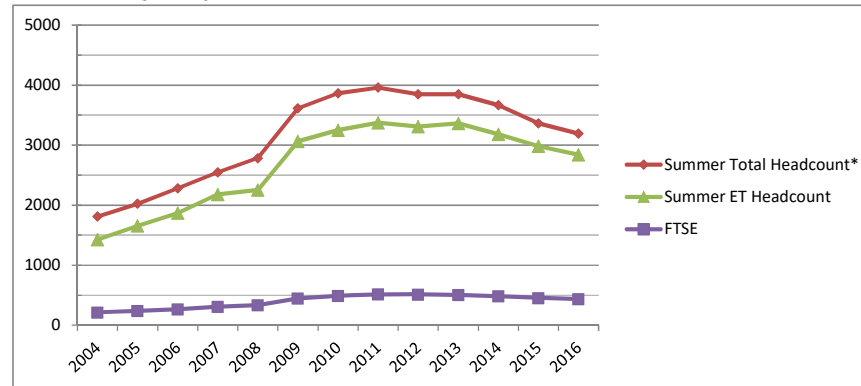
Red Mountain Headcount and FTSE Trends by Snapshot and Location, SUMMER 2004-2016

Year	Summer Total Headcount*	Summer ET Headcount	FTSE
2004	883	812	106.8
2005	787	694	83.6
2006	625	570	73.5
2007	553	506	65.0
2008	515	458	60.5
2009	409	380	49.0
2010	740	664	89.0
2011	901	802	109.6
2012	622	549	72.7
2013	516	460	59.4
2014	322	292	36.5
2015	292	272	34.7
2016	181	168	21.7



Internet Headcount and FTSE Trends by Snapshot and Location, SUMMER 2004-2016

Year	Summer Total Headcount*	Summer ET Headcount	FTSE
2004	1810	1427	214.3
2005	2025	1655	237.1
2006	2279	1869	266.0
2007	2546	2182	310.1
2008	2785	2256	333.7
2009	3612	3066	448.9
2010	3866	3251	491.1
2011	3959	3375	517.1
2012	3847	3312	511.3
2013	3848	3364	506.9
2014	3669	3180	485.0
2015	3364	2985	455.0
2016	3193	2842	436.9



MCC Audited FY FTSE
FY 2006-07 - 2015-16

MCC Audited FY FTSE

Data Source: Maricopa Trends

Fiscal Year FTSE is calculated by taking the average of the Basic 45th day FTSE from the Fall and Spring terms and adding in any short term and open entry FTSE claimed during the fiscal year. Summer FTSE spans two fiscal years, so Summer FTSE gets split between FYs on course start dates and grade posting dates. In addition, manually-calculated FTSE from the clock-hour adult basic education program are added. Finally, college Admissions and Records staff make manual adjustments to FTSE, and a district auditor may make further adjustments. Because some manual adjustments are not captured in our data reporting systems, these official district numbers may not exactly match other FTSE numbers reported previously in this report.

FTSE Type	06-07	07-08	08-09	09-10	10-11	11-12	12-13	13-14	14-15	15-16
Basic (45th Day Fall & Spr Avg)	12342.4	11836.6	11661.0	12917.0	13345.0	12832.6	12256.0	11448.0	11099.0	10337.0
Short Term and Open Entry	712.0	689.6	779.9	1040.8	1019.3	944.4	1018.2	997.8	893.9	942.0
Summer	1377.4	1127.1	1351.5	1543.0	1732.9	1585.3	1434.4	1399.0	1155.2	858.0
Adult Basic Education (ABE)	10.2	11.9	14.0	14.0	14.0	11.8	25.0	41.0	54.0	84.0
Total	14442.0	13665.2	13806.0	15515.0	16111.0	15375.0	14734.0	13886.0	13202.0	12221.0

Basic (45th Day Fall & Spr Avg) %	85%	87%	84%	83%	83%	83%	83%	82%	84%	85%
Short Term and Open Entry %	5%	5%	6%	7%	6%	6%	7%	7%	7%	8%
Summer %	10%	8%	10%	10%	11%	10%	10%	10%	9%	7%
ABE %	<1%	<1%	<1%	<1%	<1%	<1%	<1%	<1%	<1%	<1%

