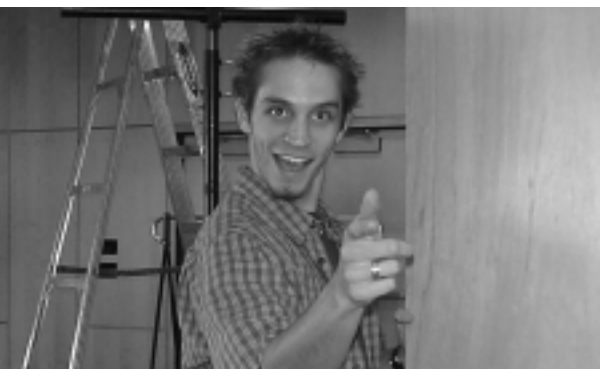


Stagedoor Players first performance at Red Mountain



Kevin Herrmann, who plays Dr. Arthur Wicksteed, helps to set portable panels on the set of *Habeas Corpus*, MCC's first Theatre production at the Red Mountain campus.

Theatre arrived for the first time at the Red Mountain campus in February! Enthusiastic about orchestrating the set in the Community Room at Red Mountain, the Stagedoor Players made maximum use of a minimum set and props invoking imagination from themselves as well as the audience. Some of the modifications needed at Red Mountain that challenged the creativity of the students were staging a hanging scene, simplifying the

lighting design, and enhancing vocal projection. Folded doors borrowed from the Art Department served as entrance and exit points instead of stage curtains. Changes to the abstract set were incorporated into the action of the play.

Director Meggan Gannon rose to the challenge of directing her first college production at not one location, but two! *Habeas Corpus* appeared at the Southern and Dobson campus the last weekend in January before taking the show to Red Mountain. Meggan, a drama enthusiast since elementary school, knew that the challenge of staging a theatre performance at two campuses was a valuable experience toward her dream of owning her own theatre.

By bringing *Habeas Corpus* to the Red Mountain campus, the Theatre Arts Department hopes that this performance sparked an interest in Red Mountain students to enroll in theatre classes, form a theatre club, or start exploring possibilities on their own such as a reader's theatre or a play-reading group.

Fitness trail with a view

Looking for a convenient way to incorporate exercise into your daily routine? Nearing completion around the perimeter of the Red Mountain campus is a two mile fitness trail which will eventually be marked in 1/2 mile increments. Beginning just outside the Fitness Center, this scenic fitness trail will allow faculty, staff, and students to experience the beauty of native Sonoran desert while exercising.



The Bulletin is published by the Office of Institutional Advancement every other Thursday from September to April for employees of Mesa Community College. Please visit www.mc.maricopa.edu/alumni for submission deadlines and publication dates.

Coordinator, Communications and Alumni Relations, **Marcy Snitzer**, marcy.snitzer@memail.maricopa.edu, 461-7792;
Assistant, Communications and Alumni Relations and Lead Photographer, **Jennifer LaForge**, jenner@mail.mc.maricopa.edu, 461-7794;
Writer, **Karen Peters**, karen.peters@memail.maricopa.edu; Graphic Designer, **Cindy Brown**, cindys@mail.mc.maricopa.edu

Mesa Community College, 1833 W. Southern Avenue, Mesa, AZ 85202



The Maricopa County Community College District is an EEO/AA Institution.

FER 10 '05

the

Bulletin



Employees guide planning for Prop 401 monies

by Larry K. Christiansen

The spring 2005 semester has begun, and planning for new buildings on MCC's Southern and Dobson and Red Mountain campuses is underway. Projects for the ten colleges that comprise our District will be staggered over a 10-year period; we are fortunate that our two comprehensive campuses have received priority one status because of our growing enrollment.

Jo Wilson, Acting Sr. Associate Dean of Instruction for Red Mountain, is leading the dialogue at Red Mountain while Carol Achs, Associate Dean of Instruction for Math, Science, and Physical Education, leads the effort for the Science and Mathematics cluster at Southern and Dobson. Enrollment trends will be analyzed to project needs. The types of programs available and their directions will be identified and defined. Classroom and

lab needs will be projected in relation to faculty needs and teaching styles.

Red Mountain will look at issues unique to that campus. What AAS programs will be available? What types of science courses will be offered, requiring what type of lab space? How will the focus on the environment for which Red Mountain has become known be maintained? Jo will work closely with department chairs and Red Mountain assistant department chairs to ensure our programs at multiple locations remain integrated. The Red Mountain Employee Council, comprised of a cross representation of faculty and staff from various departments, will provide an avenue for employees to provide input and will assist in communicating plans.

Department chairs and faculty from technology, math, life science, and physical science will

continued on inside, see Employees

Celebrating 40 Years

The first production by the Stagedoor Players was *Teahouse of the August Moon* on November 15, 1965.

Attention all cart drivers



Effective January 2005 everyone who drives utility carts must follow new guidelines. The guidelines were established to enhance the safety of pedestrians and other drivers on our campuses as well as to reduce the risk of property damage and loss. All drivers must attend and complete utility cart training and possess a valid Arizona driver's license. To date over 100 employees from various departments have completed the training.

Violations of the guidelines will be reported to the College Safety Office as an incident report, and the cart operator's supervisor will be notified. The privilege of operating a utility cart may be revoked at any time.

For more detailed information about the use of utility carts, please visit the Occupational Health and Safety web site at www.mc.maricopa.edu/administration/ohs and click on cart safety, or call Shirley Henderson at 461-7360.

Safety Guidelines

1. Operators must conduct safety checks on carts prior to operation.
2. Never leave the key to the cart in the cart.
3. Carts must come to a complete stop prior to proceeding through intersecting sidewalks or any blind spots.
4. Operators may not use cell phones, headsets, or pagers while driving.

5. Carts shall not block exits, doorways, entrances, stairs, sidewalks, fire hydrants, fire lanes, or handicap ramps.
6. Carts may not carry more passengers than seating is provided; passengers shall not ride in the bed of a cart.
7. Carts must maintain minimum safety devices; backup signal, brake lights, and horn.



8. Operators must keep arms and legs inside cart while driving.
9. Cart operators will always yield to pedestrians.
10. Carts may not travel more than 5 miles an hour or any faster than a pedestrian during heavy traffic.

Congratulations to MCC's 2005 All Arizona Academic Team members!



Barry Osharow – 1st team



Edward Joe Files – 1st team



Kally Davis – 1st team



Gregory Crane – 2nd team

MCC offers Academic Certificate in Global Citizenship

MCC's Cultural Science Department has developed a new Academic Certificate in Global Citizenship to assist students in learning to "think globally and act locally."

The coursework is designed to help students understand the interconnectedness of peoples and societies, develop a general knowledge of history and world events, accept the existence of different cultural values and attitudes, and celebrate the richness of human diversity.

Paul Harasha is the architect of MCC's new academic certificate. He is a faculty member at MCC's Red Mountain campus and assistant chair of the Cultural Science Department.

Initially students choose one of four tracks that will be the focus of their coursework, research, and experiential activities:

- Track 1 – Impact of Diverse Cultures on American Life
- Track 2 – Political and Economic Interdependence of the International Community
- Track 3 – Global/Regional Study of Cultures, Religions, and Values

- Track 4 – Science, Technology, and the World

Students then select from a variety of multidisciplinary courses that not only fulfill the certificate requirements but also apply toward their associate degrees and a wide variety of majors.

In addition to the required coursework, students conduct research on a specific global issue related to their focus area through one of the following options: Research and Presentation, the Study Abroad program, or the Model United Nations program.

The coursework and experiential learning helps to develop skills in critical thinking, inquiry, and discourse. "The ultimate goal," Paul said, "is to raise a generation of people who can see themselves in the larger perspective and recognize that we are citizens of the globe."

For more information, visit this website: www.mc.maricopa.edu/dept/d10/soc, or contact Paul Harasha, 654-7729, or Cultural Science Department chair Shereen Lerner, 461-7306.

Construction timeline

Proposed timeframes for when bonds would be sold and construction would begin are outlined below.

Red Mountain

- 2005 – Fourth building of existing circle and begin construction of second circle

Southern and Dobson

- 2005 – Science and Mathematics
- 2006 – Communications and Humanities
- 2007 – Performing and Fine Arts
- 2008 – Health and Wellness

continued from front, Employees

address infrastructure and program issues at Southern and Dobson. What will become of existing buildings once the Science and Mathematics cluster opens? Will student services be available in the cluster and, if so, what services will be offered? If student services are not incorporated into the clusters, expansion of the Student Services village will be necessary.

Equally as important to our plans is the issue of parking. Bond monies provide for surface parking, but our available

space will not take care of 50,000 students by the year 2012. Parking garages will be needed but are expensive to build and maintain, so I am pursuing alternative funding sources. Thanks to the efforts of Donella Eberle, chair of the English Department, we will have an opportunity to discuss this venture at my annual spring brown bag on February 16.

I appreciate the hard work and dedication of our employees as we move forward.