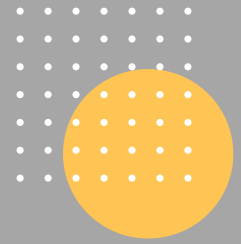




# EMT200 REFRESHER COURSE FOR CERTIFIED EMTs



## ENROLLMENT STEPS

Complete steps online and/or in person

<https://www.mesacc.edu/departments/allied-health>

Designed to meet the National and Arizona Department of Health Services (A-DHS) recertification for EMTs. Enhances the knowledge base of the Emergency Medical Technician (EMT) and reinforces basic skills competencies.

Prerequisites: Current validation in Basic Life Support (BLS) Health Care Provider/Professional Rescuer

- **Out of State applicants** must show proof of current state or National Registry certification to be eligible to take the EMT Refresher course.
- National Registry written and practical testing is required if not currently nationally certified.
- An Arizona certification that has expired but is within two years from the expiration date may take the EMT Refresher course and must take National Registry written exam.



### Step 1

#### Get Admitted to MCC

Create an MEID Account and Apply for admissions for Mesa Community College at [maricopa.edu/admissions](http://maricopa.edu/admissions)



### Step 2

#### Complete an EMT200 Interest Form

<https://forms.gle/A4xHM3ACr6qi6EoRA>