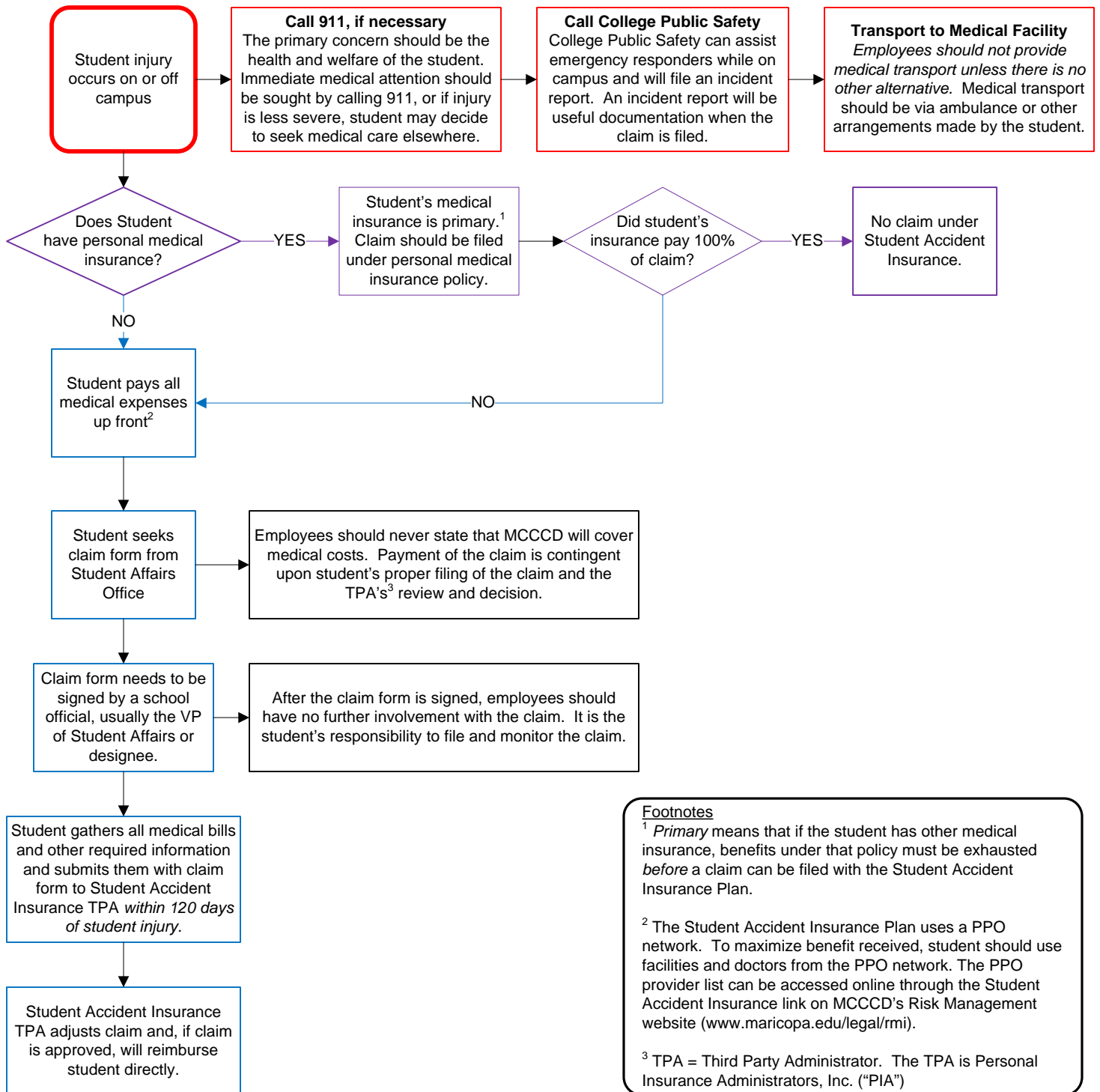


# Student Accident Insurance Plan Claim Process



## Footnotes

<sup>1</sup> *Primary* means that if the student has other medical insurance, benefits under that policy must be exhausted *before* a claim can be filed with the Student Accident Insurance Plan.

<sup>2</sup> The Student Accident Insurance Plan uses a PPO network. To maximize benefit received, student should use facilities and doctors from the PPO network. The PPO provider list can be accessed online through the Student Accident Insurance link on MCCCDC's Risk Management website ([www.maricopa.edu/legal/rmi](http://www.maricopa.edu/legal/rmi)).

<sup>3</sup> TPA = Third Party Administrator. The TPA is Personal Insurance Administrators, Inc. ("PIA")

## For More Information Contact

Student Accident Insurance Campus Rep:

Public Safety:

Risk Management: 480-731-8879 or [www.maricopa.edu/legal/rmi](http://www.maricopa.edu/legal/rmi)